



Lokmanya Tilak Jankalyan Shikshan Sanstha's

PRIYADARSHINI COLLEGE OF ENGINEERING

(Recognised by A.I.C.T.E., New Delhi & Govt. of Maharashtra, Affiliated to R.T.M.Nagpur University)

Near CRPF Campus, Hingna Road, Nagpur-440 019, Maharashtra (India)

Phone : 07104 – 236381, 237307, Fax : 07104 – 237681,

email : principal.pce.ngp@gmail.com, www.pcenagpur.edu.in



1.4.2: Feedback process of the Institution may be classified as follows:

Options:

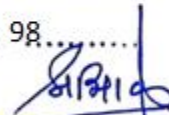
A: Feedback collected, analyzed and action taken and feedback available on website

Stakeholders feedback Analysis



PRIYADARSHINI COLLEGE
OF ENGG. NAGPUR
CERTIFIED DOCUMENT

Page ..2..... to . 98.....


Principal



Lokmanya Tilak Jankalyan Shikshan Sanstha's

PRIYADARSHINI COLLEGE OF ENGINEERING

(Recognised by A.I.C.T.E., New Delhi & Govt. of Maharashtra, Affiliated to R.T.M.Nagpur University)

Near CRPF Campus, Hingna Road, Nagpur-440 019, Maharashtra (India)

Phone : 07104 – 236381, 237307, Fax : 07104 – 237681,

email : principal.pce.ngp@gmail.com, www.pcenagpur.edu.in



Department of Mechanical Engineering

Stakeholders feedback Analysis

Session-2020-2021

Priyadarshini College of Engineering, Nagpur
Mechanical Engineering Department
FEEDBACK ANALYSIS

STUDENT'S FEEDBACK ON CURRICULUM

SESSION: 2020-21

Number of students participated in the feedback =283

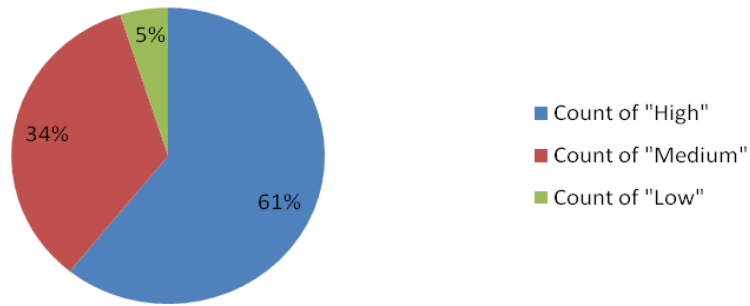
Sr. No.	Particulars	Count of "High"	Count of "Medium"	Count of "Low"	Impact of Feedback
1	The sequence of the courses (subjects) in the curriculum	172	97	14	2.56
2	The objectives stated for each of the course.	119	139	25	2.33
3	The offering of the electives in terms of their relevance to the specialized streams.	132	122	29	2.36
4	How do you rate the electives offered in relation to the technological advancements.	147	112	24	2.43
5	Content of the courses encourages extra learning / self learning.	136	127	20	2.41
6	How do you rate the percentage(Number) of courses having practical components.	125	131	27	2.35
7	How do you rate the domain used for designing/performing the experiments in the laboratory.	150	102	31	2.42


HOD
DEPARTMENT OF MECH. ENGG
P.C.E. NAGPUR

Dr. K. S. Zakiuddin
Prof. & Head
Mech. Engg. Dept.

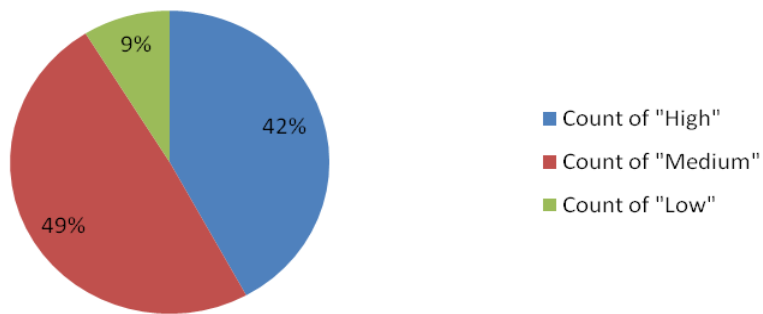
1. The sequence of the courses (subjects) in the curriculum.

283 responses



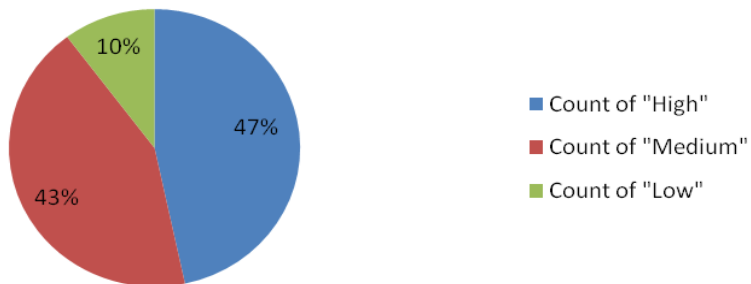
2. The objectives stated for each of the course..

283 responses



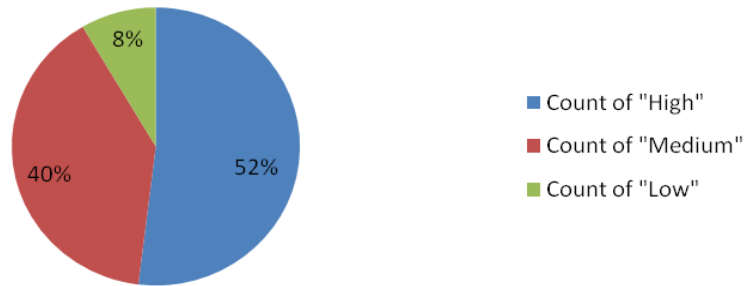
3. The offering of the electives in terms of their relevance to the specialized streams.

283 responses



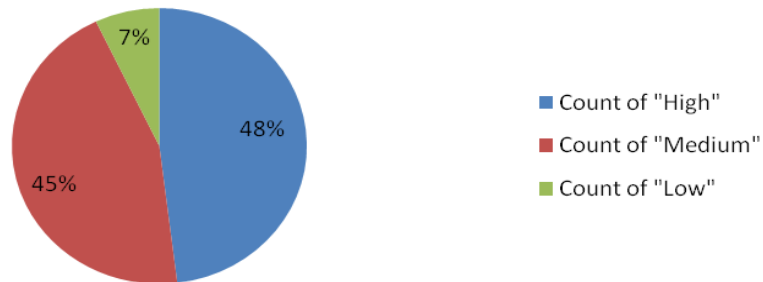
4. How do you rate the electives offered in relation to the technological advancements.

283 responses



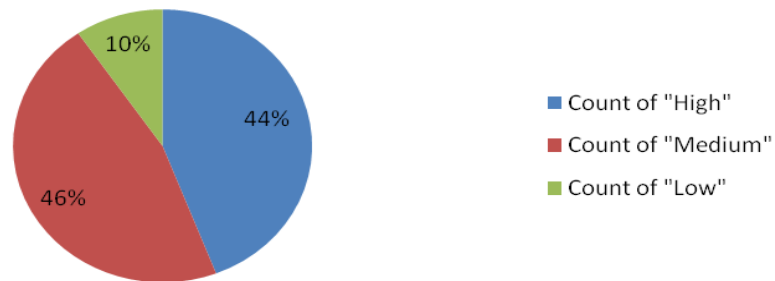
5. Content of the courses encourages extra learning / self learning.

283 responses



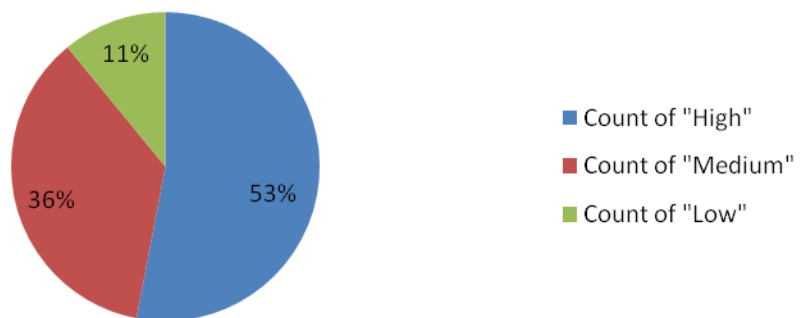
6. How do you rate the percentage(Number) of courses having practical components.

283 responses



7. How do you rate the domain used for designing/performing the experiments in the laboratory.

283 responses




HOD
DEPARTMENT OF MECH. ENGG
P.C.E NAGPUR

Priyadarshini College of Engineering, Nagpur
Mechanical Engineering Department
FEEDBACK ANALYSIS

ALUMNI FEEDBACK ON CURRICULUM
SESSION: 2020-21

Number of alumni participated in the feedback = 29

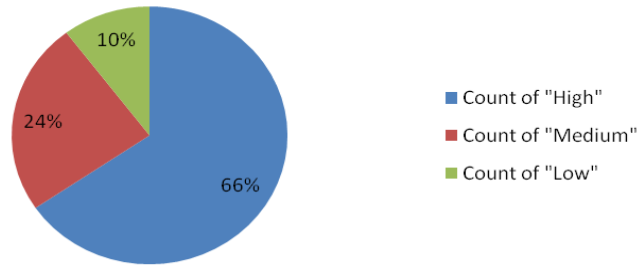
Sr. No.	Particulars	Count of "High"	Count of "Medium"	Count of "Low"	Impact of Feedback
1	Curriculum meets prerequisite and basic knowledge required for the career	19	7	3	2.55
2	Usefulness of learning experience in career	16	13	0	2.55
3	Elective offered in relation to the technological advancements	21	8	0	2.72
4	The new courses (Subjects) introduced to meet contemporary (existing) requirements.	9	9	11	1.93
5	Design of the courses (Subjects) encourages/motivates extra learning or self learning.	23	6	0	2.79
6	How do you rate the competencies/outcomes in relation to the course content?	10	17	2	2.28
7	What other course that you suggest to be included in the curriculum?	11	18	0	2.38


HOD
DEPARTMENT OF MECH ENGG
P.C.E. NAGPUR

Dr. K. S. Zakiuddin
Prof. & Head
Mech. Engg. Dept.

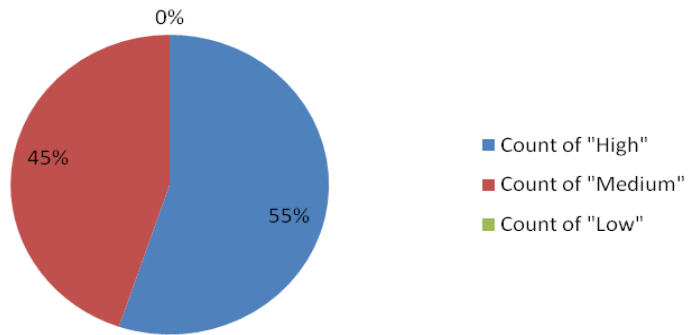
1. Curriculum meets prerequisite and basic knowledge required for the career.

29 responses



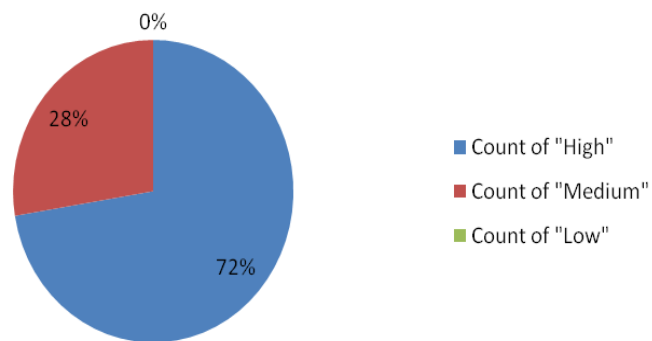
2. Usefulness of learning experience in career.

29 responses



3. Elective offered in relation to the technological advancements.

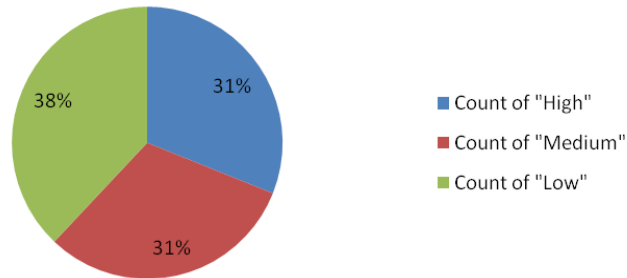
29 responses




HOD
DEPARTMENT OF MECH. ENGG
P.C.E NAGPUR

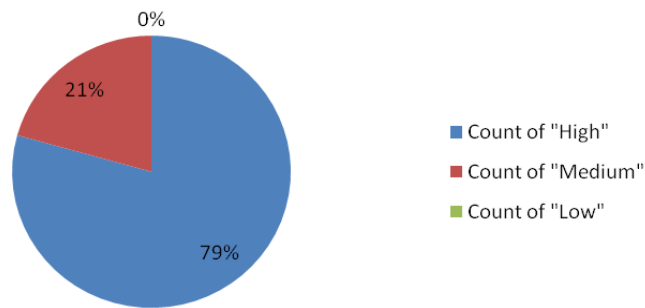
4. The new courses (Subjects) introduced to meet contemporary (existing) requirements.

29 responses



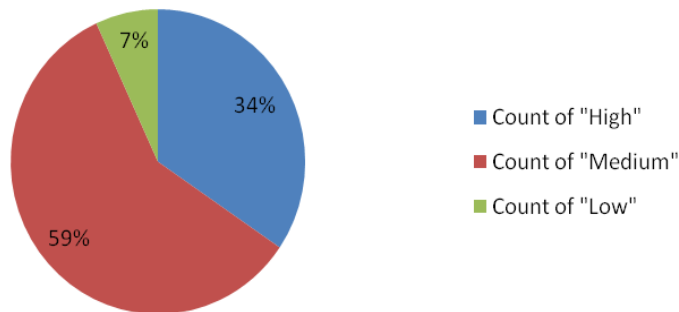
5. Design of the courses (Subjects) encourages/motivates extra learning or self learning.

29 responses



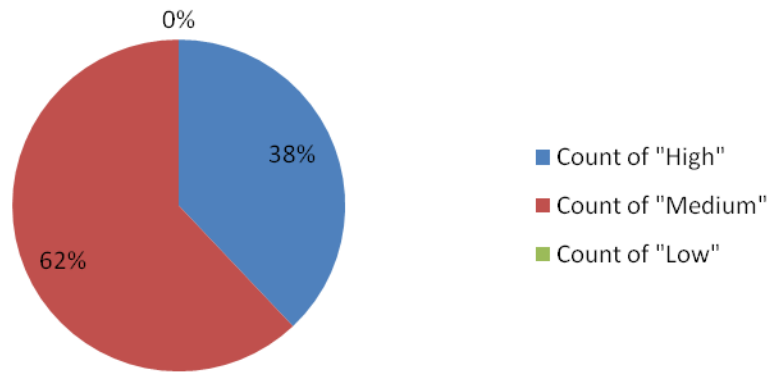
6. How do you rate the competencies/outcomes in relation to the course content?

29 responses



7. What other course that you suggest to be included in the curriculum?

29 responses




HOD
DEPARTMENT OF MECH. ENGG
P.C.E NAGPUR

Priyadarshini College of Engineering, Nagpur
Mechanical Engineering Department
FEEDBACK ANALYSIS

EMPLOYER FEEDBACK ON CURRICULUM
SESSION: 2020-21

Number of alumni participated in the feedback = 6

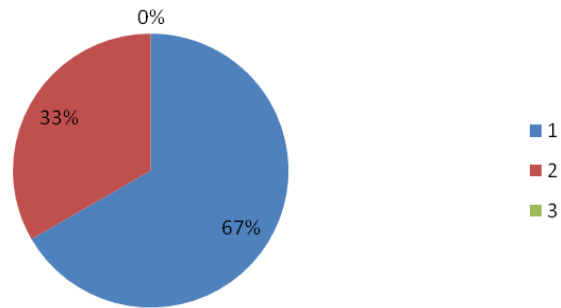
Sr. No.	Particulars	Count of "High"	Count of "Medium"	Count of "Low"	Impact of Feedback
1	How do you rate relevance of the courses in relation to the program?	4	2	0	2.67
2	How do you rate sufficiency of the courses related to industry that are included in the program?	3	3	0	2.5
3	How do you rate the competencies/outcomes in relation to the course content?	2	4	0	2.33
4	How do you rate relevance of the topic to the industry?	4	2	0	2.67
5	Rate the offering of the subjects in relation with the specialization streams?	4	2	0	2.67
6	How do you rate the applicability of the domains and the tools used for designing the experiments in term of existing practices in the industry?	3	3	0	2.5
7	How do you rate the experiments in term of their relevance to the real life applications?	4	2	0	2.67
8	How do you rate the proficiency of our students working with you?	6	0	0	3
9	What other course that you suggest to be included in the curriculum?	3	3	0	2.5


HOD
DEPARTMENT OF MECH. ENGG.
PCE NAGPUR

Dr. K. S. Zakiuddin
Prof. & Head
Mech. Engg. Dept.

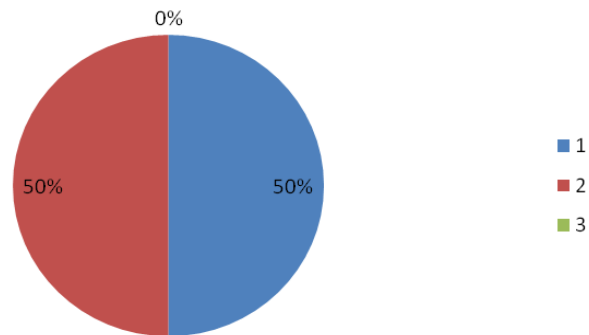
1. How do you rate relevance of the courses in relation to the program?

6 responses



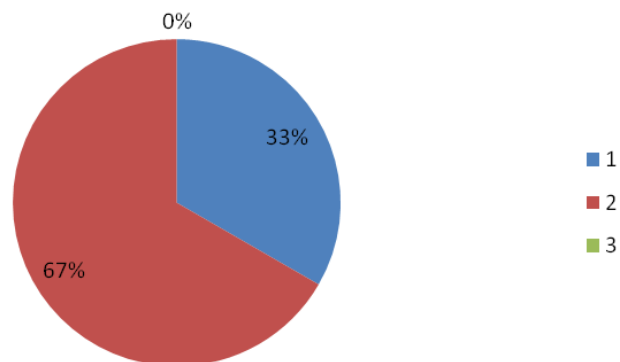
2. How do you rate sufficiency of the courses related to industry that are included in the program?

6 responses



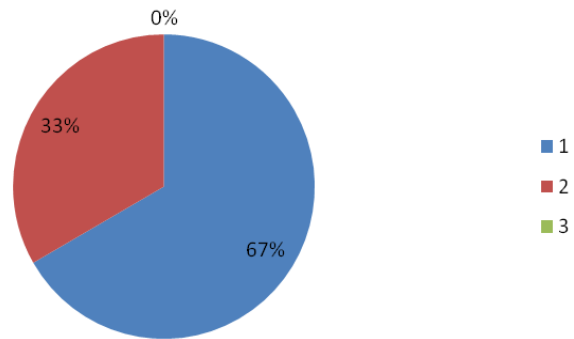
3. How do you rate the competencies/outcomes in relation to the course content?

6 responses



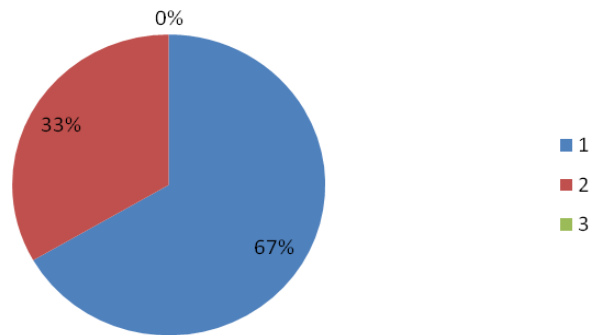
4. How do you rate relevance of the topic to the industry?

6 responses



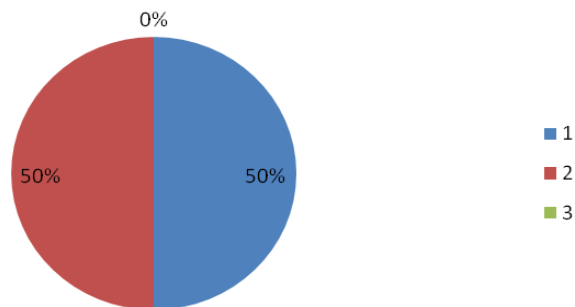
5. Rate the offering of the subjects in relation with the specialization streams?

6 responses



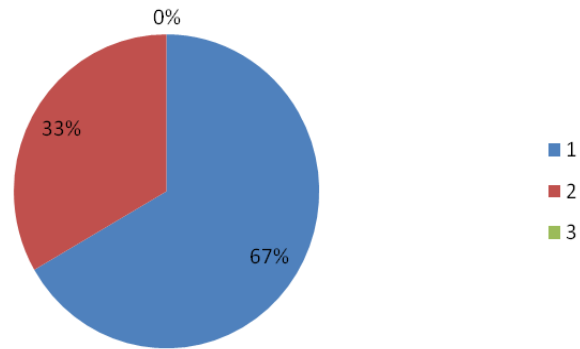
6. How do you rate the applicability of the domains and the tools used for designing the experiments in term of existing practices in the industry?

6 responses



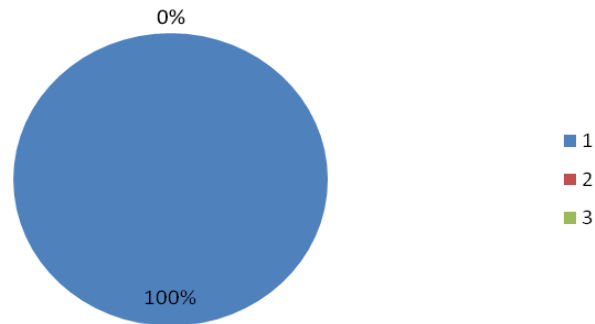
7. How do you rate the experiments in term of their relevance to the real life applications?

6 responses



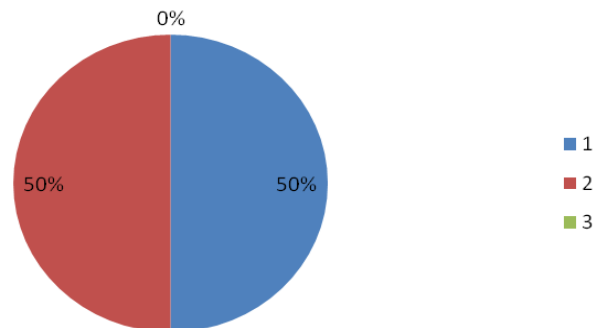
8. How do you rate the proficiency of our students working with you?

6 responses



9. What other course that you suggest to be included in the curriculum?

6 responses



Priyadarshini College of Engineering, Nagpur
Mechanical Engineering Department
FEEDBACK ANALYSIS

TEACHERS FEEDBACK ON CURRICULUM
SESSION: 2020-21

Number of teachers participated in the feedback = 22

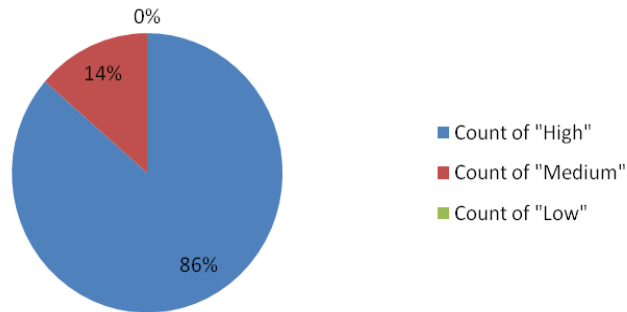
Sr. No.	Particulars	Count of "High"	Count of "Medium"	Count of "Low"	Impact of Feedback
1	The learning objectives are clear and appropriate to the program.	19	3	0	2.86
2	The curriculum and syllabus are well organized and suitable to the program.	17	5	0	2.77
3	The text Books/Reference Books are well suited to the course.	18	4	0	2.81
4	The system followed by the university for the design and development of curriculum is ineffective.	11	11	0	2.5
5	Provision to update curriculum time to time.	11	10	1	2.45
6	How do you rate the distribution of contact hours among the course components.	7	6	9	1.91
7	The curriculum has a good balance between theory and practical.	16	4	2	2.63
8	How do you rate the electives offered in relation to the technological advancements.	13	8	1	2.54


Dr. K. S. Zakluddin
Prof. & Head
Mech. Engg. Dept.

HOD
DEPARTMENT OF MECH. ENGG
P.C.E NAGPUR

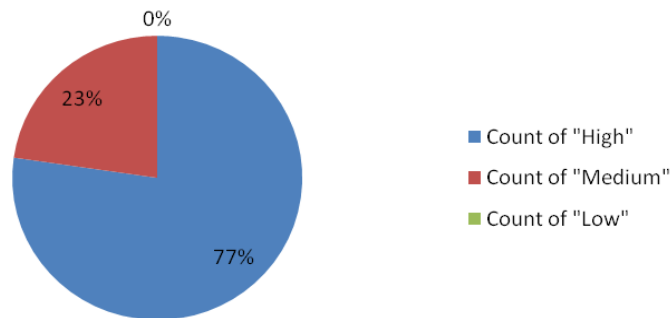
1. The learning objectives are clear and appropriate to the program.

22 responses



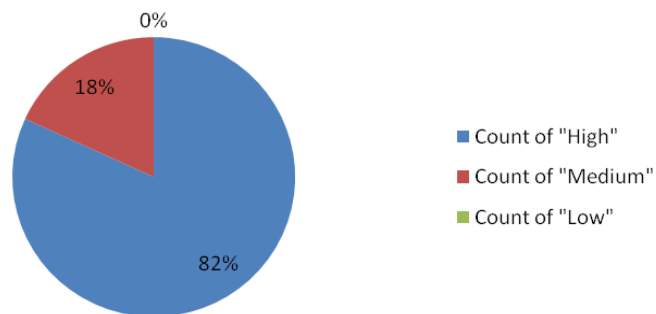
2. The curriculum and syllabus are well organized and suitable to the program.

22 responses



3. The text Books/Reference Books are well suited to the course.

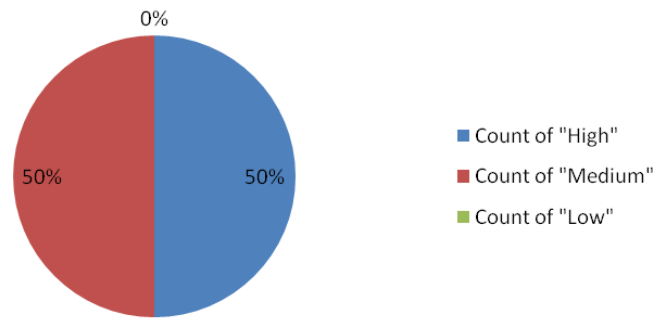
22 responses




HOD
DEPARTMENT OF MECH. ENGG
P.C.E. NAGPUR

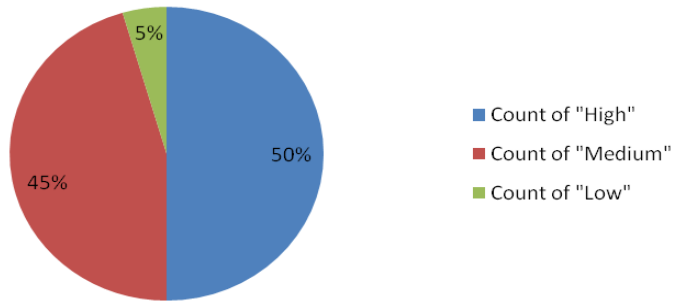
4. The system followed by the university for the design and development of curriculum is effective.

22 responses



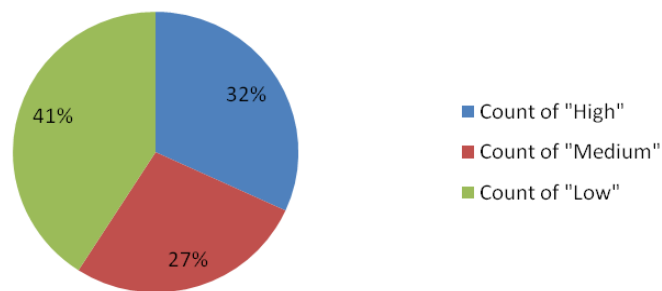
5. Provision to update curriculum time to time.

22 responses



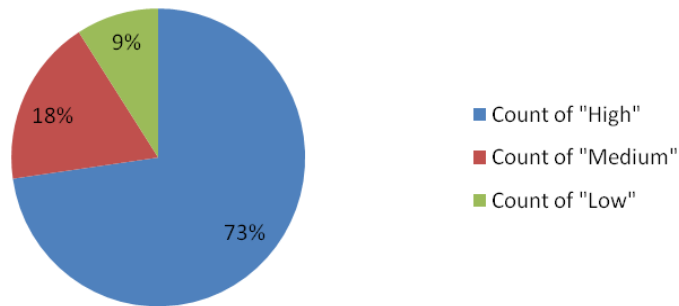
6. How do you rate the distribution of contact hours among the course components.

22 responses



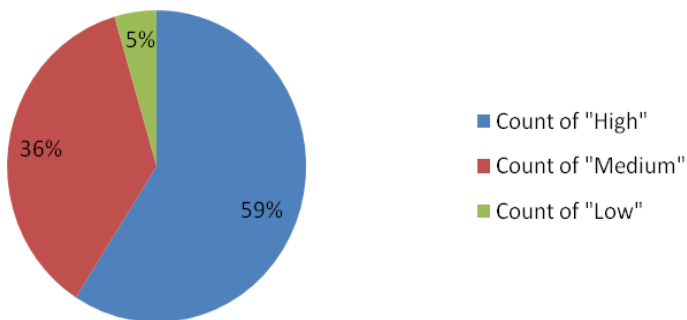
7. The curriculum has a good balance between theory and practical.

22 responses




8. How do you rate the electives offered in relation to the technological advancements.

22 responses




HOD
DEPARTMENT OF MECH. ENGG
P.C.E NAGPUR


Principal
Priyadarshini College of Engg.
Nagpur.



Lokmanya Tilak Jankalyan Shikshan Sanstha's

PRIYADARSHINI COLLEGE OF ENGINEERING

(Recognised by A.I.C.T.E., New Delhi & Govt. of Maharashtra, Affiliated to R.T.M.Nagpur University)

Near CRPF Campus, Hingna Road, Nagpur-440 019, Maharashtra (India)

Phone : 07104 – 236381, 237307, Fax : 07104 – 237681,

email : principal.pce.ngp@gmail.com, www.pcenagpur.edu.in



Department of Civil Engineering

Stakeholders feedback Analysis

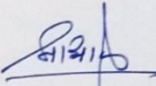
Session-2020-2021

Priyadarshini College of Engineering
Department of Civil Engineering
Feedback Analysis
Students Feedback on Curriculum

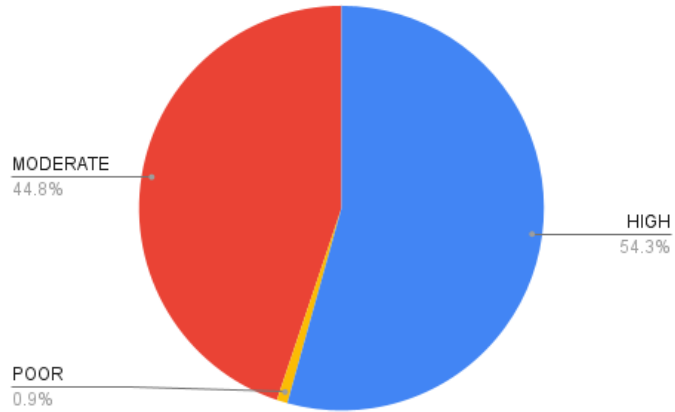
Session 2020-21

Number of Students participated in the feedback = 48

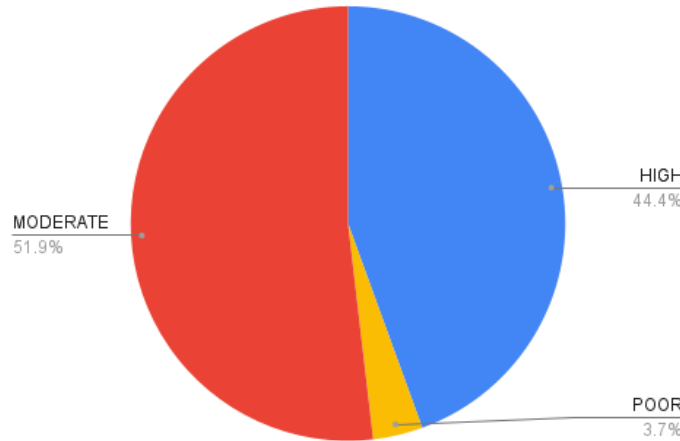
Sr.No.	Particulars	Count of High (weight=3)	Count of Moderate (weight=2)	Count of Poor (weight=1)	Impact of Feedback
1	The relevance of the courses (subjects) in the curriculum	21	26	1	2.42
2	The objectives stated for each of the course.	16	28	1	2.19
3	The offering of the electives in terms of their relevance to the specialized streams.	17	26	5	2.25
4	How do you rate the electives offered in relation to the technological advancements.	19	25	4	2.31
5	Content of the courses encourages extra learning / self learning.	20	25	3	2.35
6	How do you rate the percentage (Number) of courses having practical components?	19	25	4	2.31
7	How do you rate the domain used for Designing/performing the experiments in the laboratory.	14	28	6	2.17


HOD, CIVIL

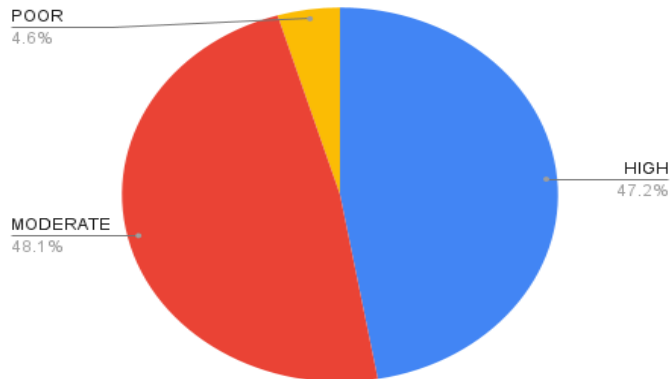
1. The relevance of the courses (subjects) in the curriculum



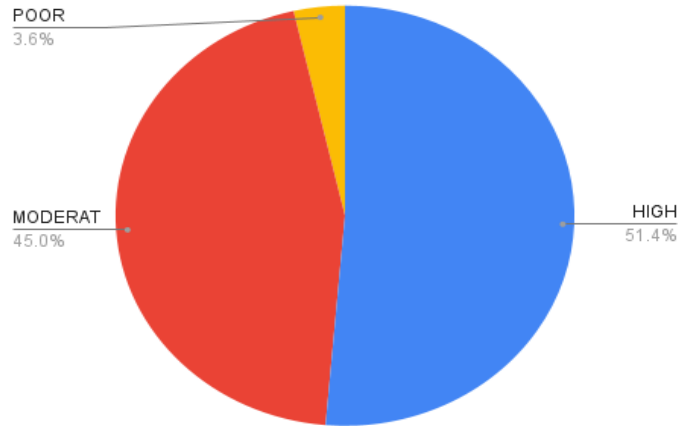
2. The objectives stated for each of the course.



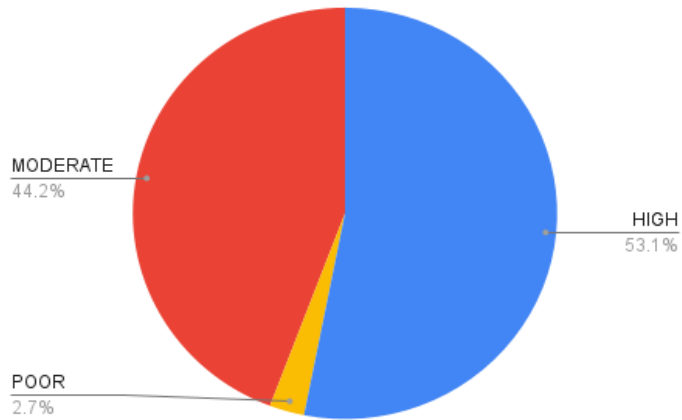
3. The offering of the electives in terms of their relevance to the specialized streams.



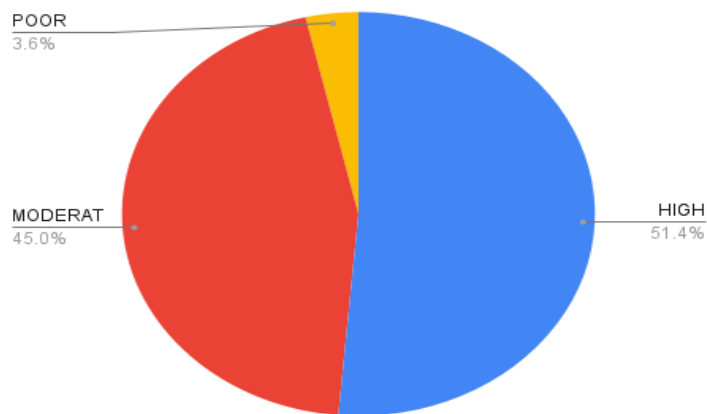
4. How do you rate the electives offered in relation to the technological advancements.



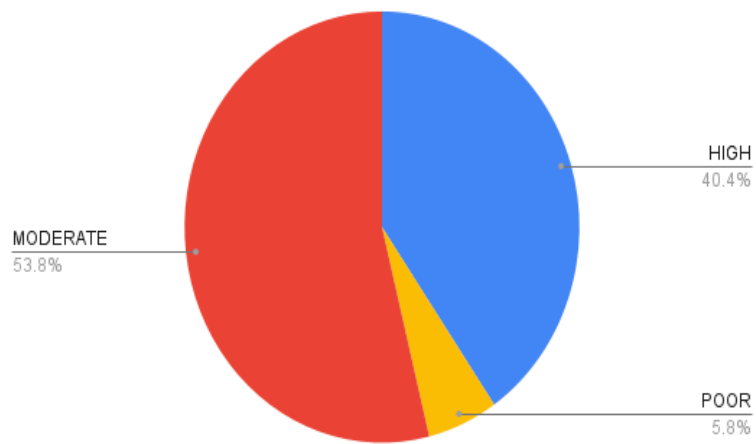
5. Content of the courses encourages extra learning / self learning.



6. How do you rate the percentage (Number) of courses having practical components?



7. How do you rate the domain used for Designing/performing the experiments in the laboratory.



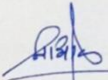
S. B. S.

Priyadarshini College of Engineering
Department of Civil Engineering
Feedback Analysis
Alumni Feedback on Curriculum

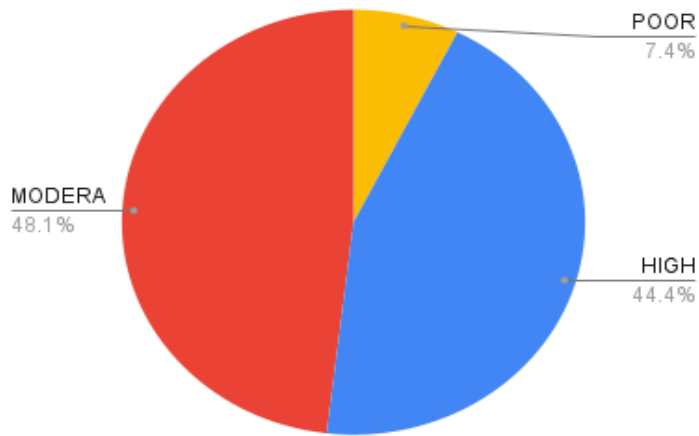
Session 20120-21

Number of alumni participated in the feedback = 24

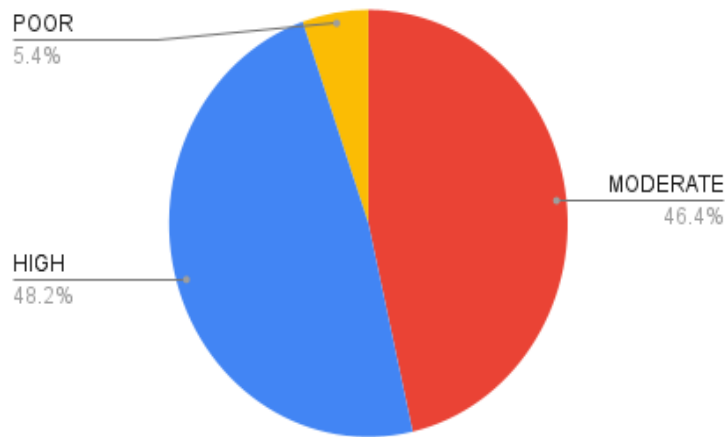
Sr.No.	Particulars	Count of High (weight=3)	Count of Moderate (weight=2)	Count of Poor (weight=1)	Impact of Feedback
1	Curriculum meets prerequisite and basic knowledge required for the career.	8	12	4	2.17
2	Usefulness of learning experience in career.	9	12	3	2.25
3	Electives offered in relation to the technological advancements.	8	13	3	2.21
4	The new courses (subjects) Introduced meet contemporary (existing) requirements.	9	11	4	2.21
5	Design of the courses (subjects) encourages / motivates extra learning or self learning.	8	13	3	2.21
6	How do you rate the competencies/outcomes in relation to the course content?	8	14	2	2.25
7	What other courses that you suggest to be included in the curriculum?	8	16	0	2.33


HOD, CIVIL

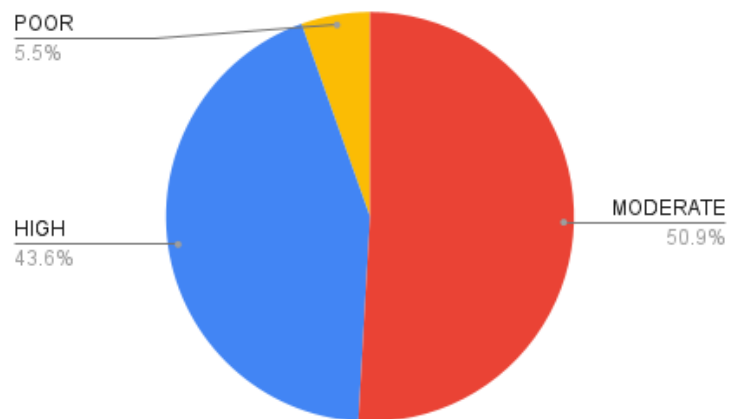
1. Curriculum meets prerequisite and basic knowledge required for the career.



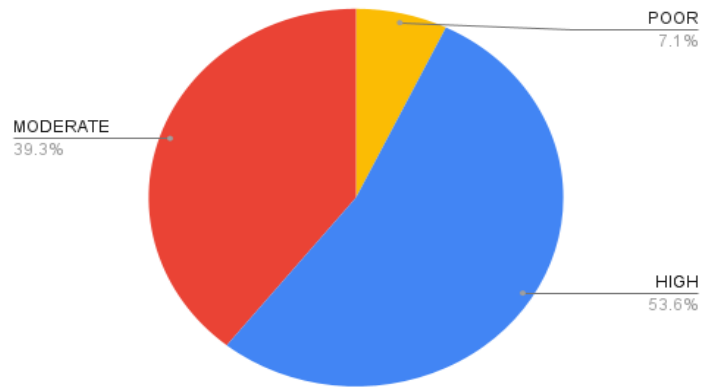
2. Usefulness of learning experience in career.



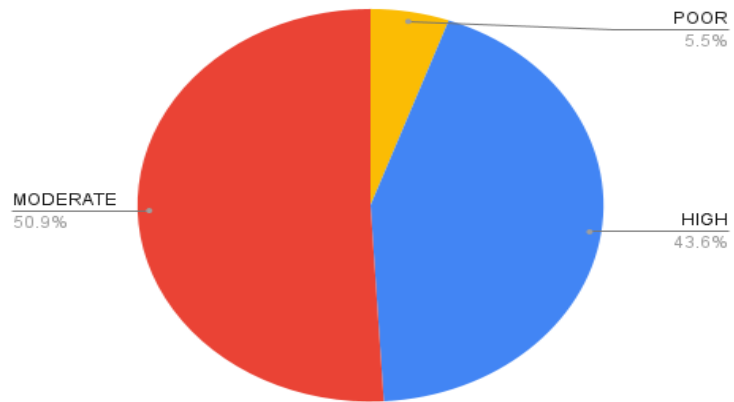
3. Electives offered in relation to the technological advancements.



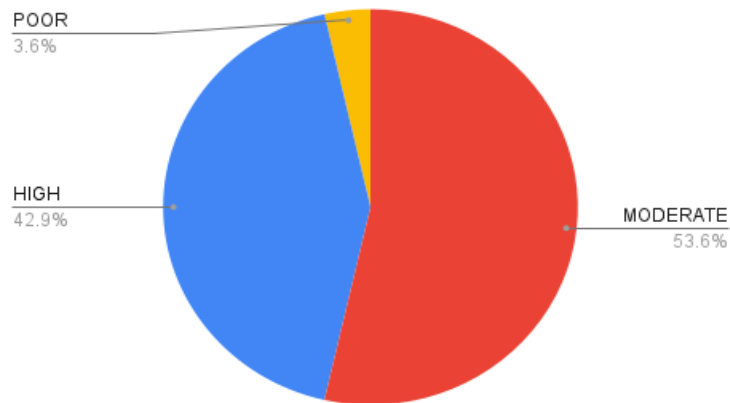
4. The new courses (subjects) Introduced meet contemporary (existing) requirements.



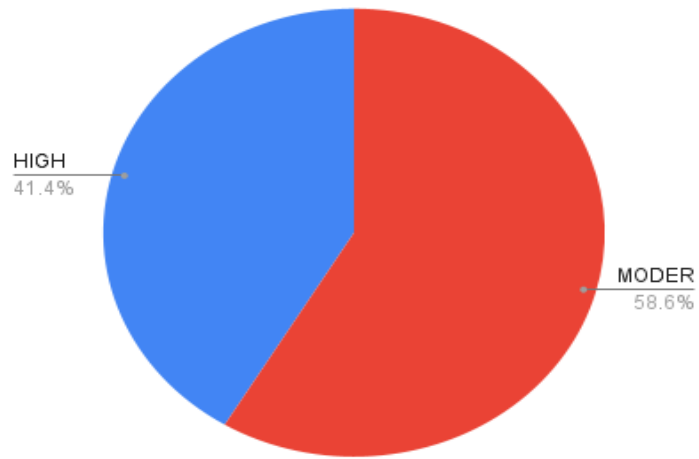
5. Design of the courses (subjects) encourages / motivates extra learning or self learning.



6. How do you rate the competencies/outcomes in relation to the course content?



7. What other courses that you suggest to be included in the curriculum?



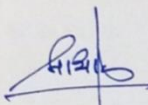
[Handwritten signature]

Priyadarshini College of Engineering
Department of Civil Engineering
Feedback Analysis
Employer Feedback on Curriculum

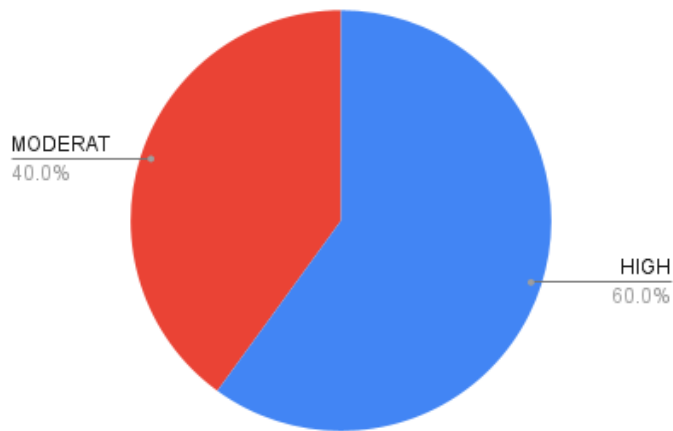
Session 2020-21

Number of Employer participated in the feedback = 5

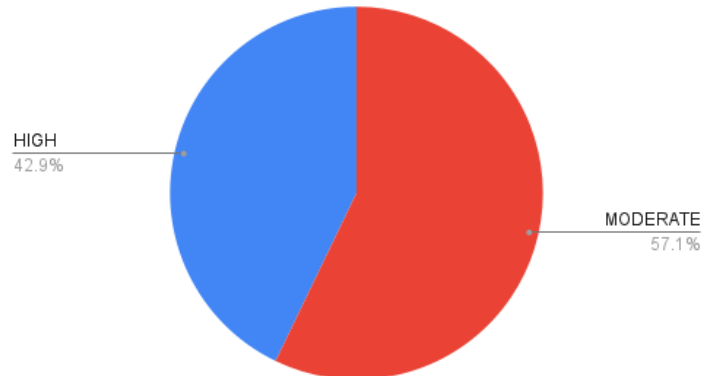
Sr.No.	Particulars	Count of High (weight=3)	Count of Moderate (weight=2)	Count of Poor (weight=1)	Impact of Feedback
1	How do you rate relevance of the courses in relation to the program?	3	2	0	2.60
2	How do you rate the sufficiency of the courses related to industry that are included in the program?	2	3	0	2.40
3	How do you rate the competencies/outcomes in relation to the course content?	2	3	0	2.40
4	How do you rate the relevance of the topics to the Industry?	2	3	0	2.40
5	Rate the offering of the subjects in relation to the specialization streams?	3	2	0	2.60
6	How do you rate the applicability of the domains and the tools used for designing the experiments in terms of existing practices in the Industry?	2	3	0	2.40
7	How do you rate the experiments in terms of their relevance to the real life application?	3	2	0	2.60
8	How do you rate the proficiency of our students working with you?	5	0	0	3.00
9	What other courses that you suggest to be included in the curriculum?	3	2	0	2.60


HOD , CIVIL

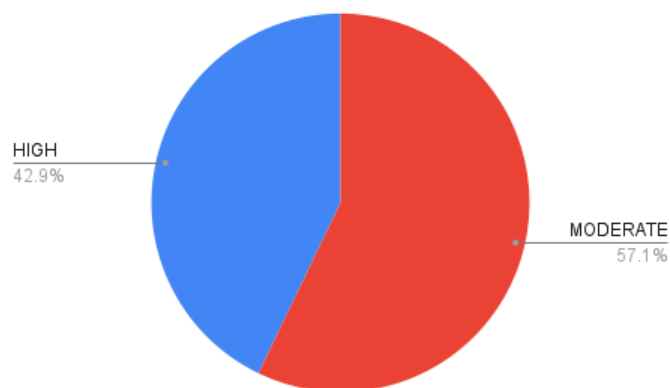
1. How do you rate relevance of the courses in relation to the program?



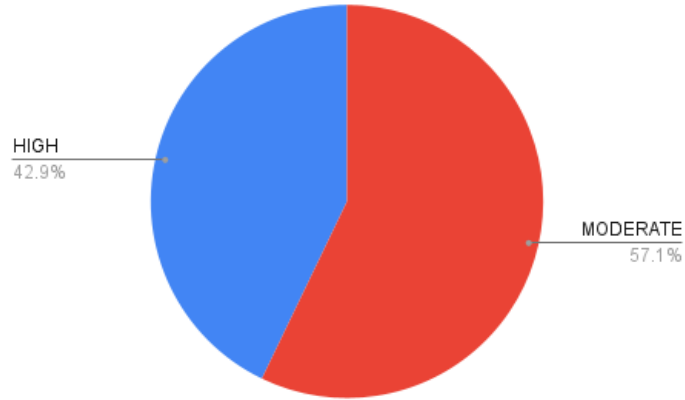
2. How do you rate the sufficiency of the courses related to industry that are included in the program?



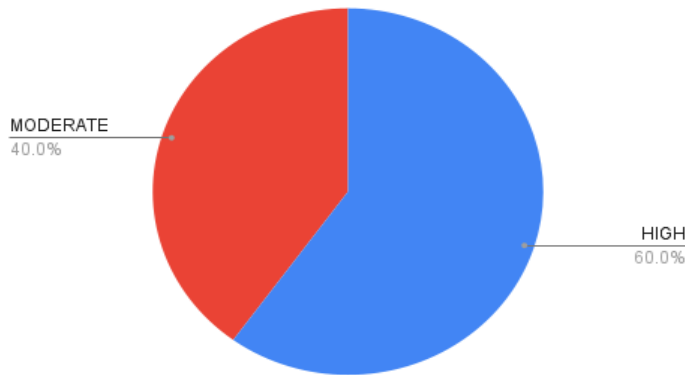
3. How do you rate the competencies/outcomes in relation to the course content?



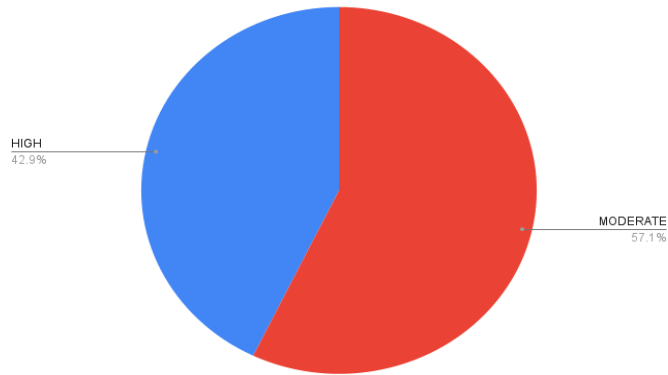
4. How do you rate the relevance of the topics to the Industry?



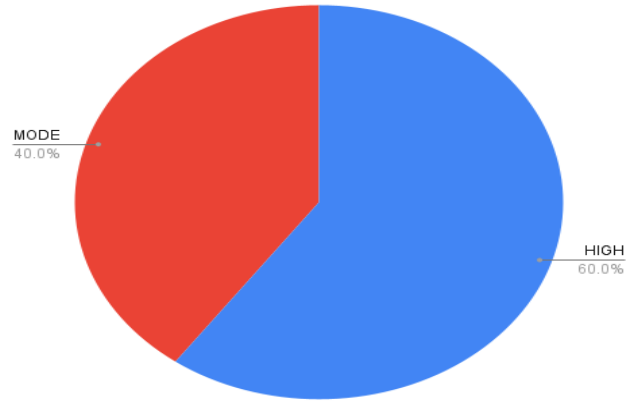
5. Rate the offering of the subjects in relation to the specialization streams?



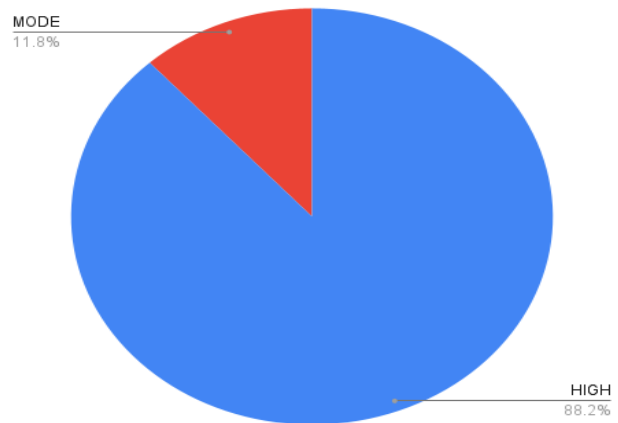
6. How do you rate the applicability of the domains and the tools used for designing the experiments in terms of existing practices in the Industry?



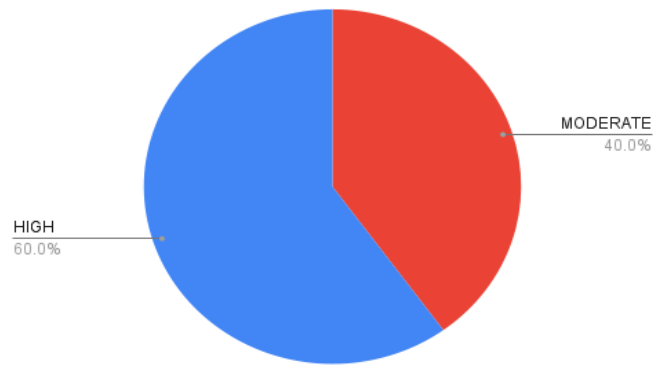
7. How do you rate the experiments in terms of their relevance to the real life application?



8. How do you rate the proficiency of our students working with you?



9. What other courses that you suggest to be included in the curriculum?

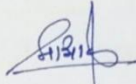


Priyadarshini College of Engineering
Department of Civil Engineering
Feedback Analysis
Teachers Feedback on Curriculum

Session 2020-21

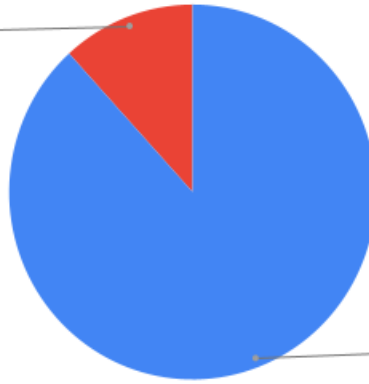
Number of teachers participated in the feedback = 18

Sr.No.	Particulars	Count of High (weight=3)	Count of Moderate (weight=2)	Count of Poor (weight=1)	Impact of Feedback
1	The learning objectives are clear and appropriate to the program.	15	3	0	2.83
2	The curriculum and syllabus are well organized and suitable to the program.	15	3	0	2.83
3	The text Books/Reference Books are well suited to the course.	15	3	0	2.83
4	How do you rate the competencies/outcomes in relation to the course content?	11	7	0	2.61
5	Provision to update curriculum time to time.	7	11	0	2.39
6	How do you rate the applicability of the domains and the tools used for designing the experiments in terms of existing practices in the Industry?	9	7	2	2.39
7	The curriculum has a good balance between theory and practical.	10	7	1	2.50
8	How do you rate the electives offered in relation to the technological advancements.	6	10	2	2.22


 HOD, CIVIL

1. The learning objectives are clear and appropriate to the program.

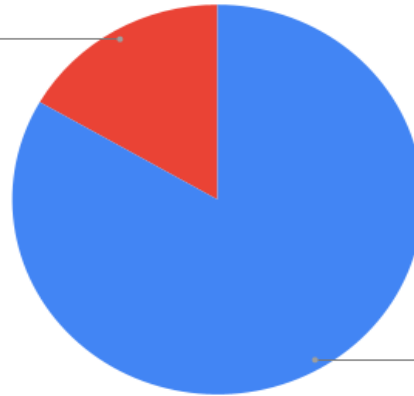
MODERATE
11.8%



HIGH
88.2%

2. The curriculum and syllabus are well organized and suitable to the program.

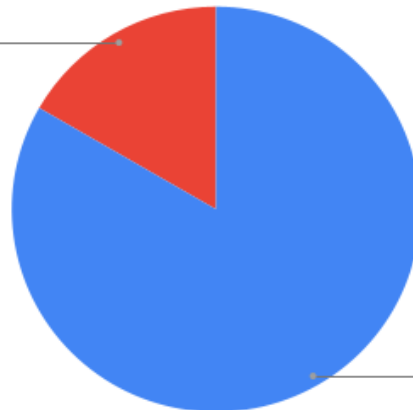
MODERATE
16.7%



HIGH
83.3%

3. The text Books/Reference Books are well suited to the course.

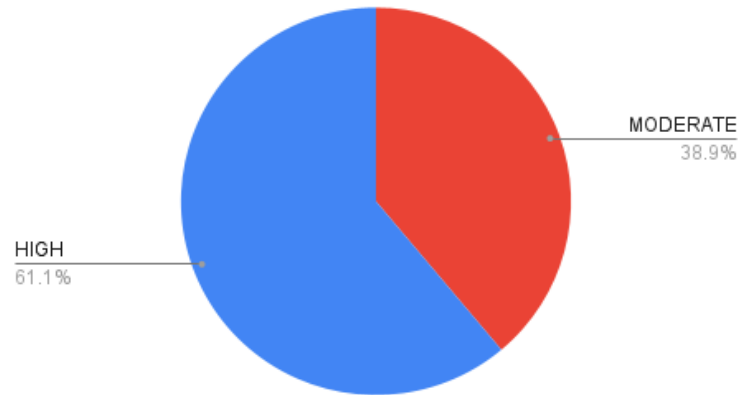
MODERATE
16.7%



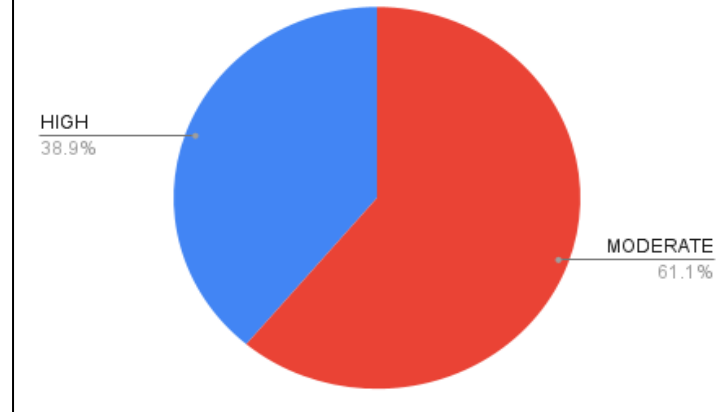
HIGH
83.3%

A handwritten signature in blue ink, appearing to be 'S. B. B.' followed by a flourish.

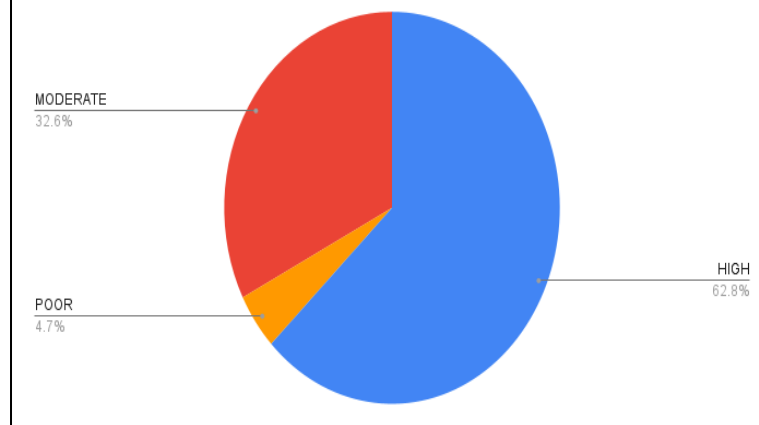
4. How do you rate the competencies/outcomes in relation to the course content?



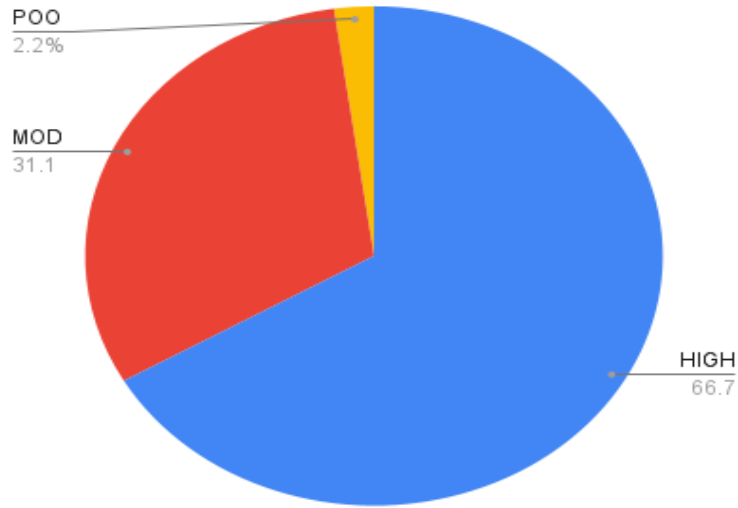
5. Provision to update curriculum time to time.



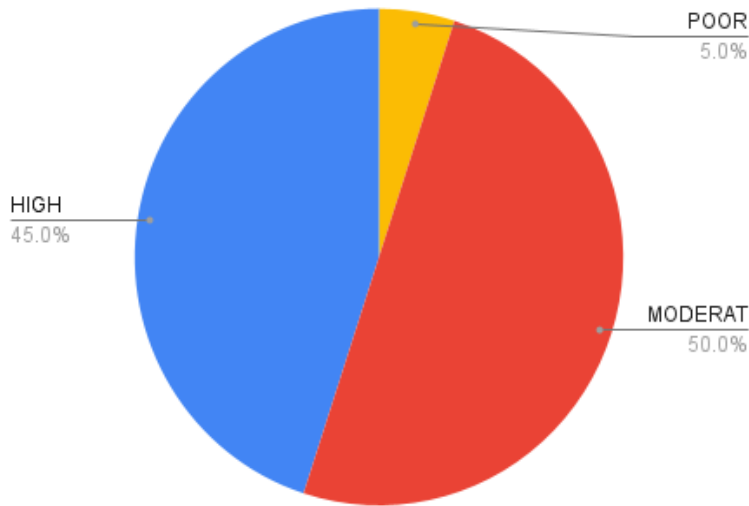
6. How do you rate the applicability of the domains and the tools used for designing the experiments in terms of existing practices in the Industry?



7. The curriculum has a good balance between theory and practical.



8. How do you rate the electives offered in relation to the technological advancements.



Dr.S.A.Dhale
HOD

mpsingh
Principal
Priyadarshini College of Eng.
Nagpur.



Lokmanya Tilak Jankalyan Shikshan Sanstha's
PRIYADARSHINI COLLEGE OF ENGINEERING

(Recognised by A.I.C.T.E., New Delhi & Govt. of Maharashtra, Affiliated to R.T.M.Nagpur University)
Near CRPF Campus, Hingna Road, Nagpur-440 019, Maharashtra (India)
Phone : 07104 – 236381, 237307, Fax : 07104 – 237681,
email : principal.pce.ngp@gmail.com, www.pcenagpur.edu.in



Department of Electronics & Power (Electrical) Engineering

Stakeholders feedback Analysis

Session-2020-2021

Priyadarshini College of Engineering
Department of Electronics & Power Engineering

Feedback Analysis

Teachers Feedback on Curriculum

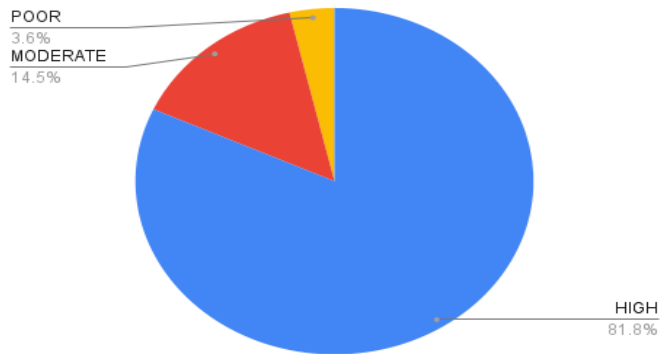
Session 2020-21

Number of teachers participated in the feedback = 21

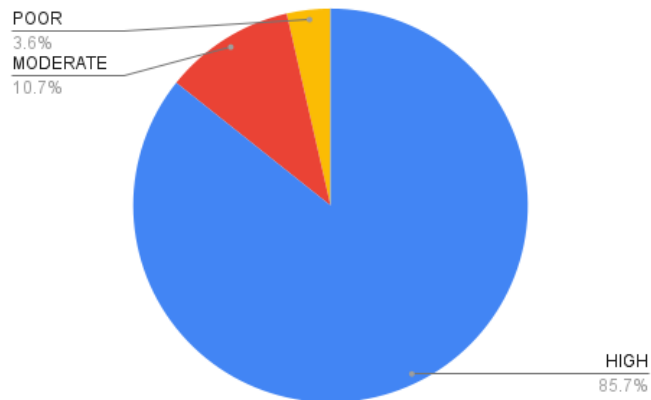
Sr.No.	Particulars	Count of High (weight=3)	Count of Moderate (weight=2)	Count of Poor (weight=1)	Impact of Feedback
Q.1	The learning objectives are clear and appropriate to the program.	15	4	2	2.62
Q.2	The curriculum and syllabus are well organized and suitable to the program.	16	3	2	2.67
Q.3	The text Books/Reference Books are well suited to the course.	11	7	3	2.38
Q.4	How do you rate the competencies/outcomes in relation to the course content?	13	5	3	2.48
Q.5	Provision to update curriculum time to time.	16	3	2	2.67
Q.6	How do you rate the applicability of the domains and the tools used for designing the experiments in terms of existing practices in the Industry?	12	5	4	2.38
Q.7	The curriculum has a good balance between theory and practical.	11	8	2	2.43
Q.8	How do you rate the electives offered in relation to the technological advancements?	20	1	0	2.95


HOD,EP

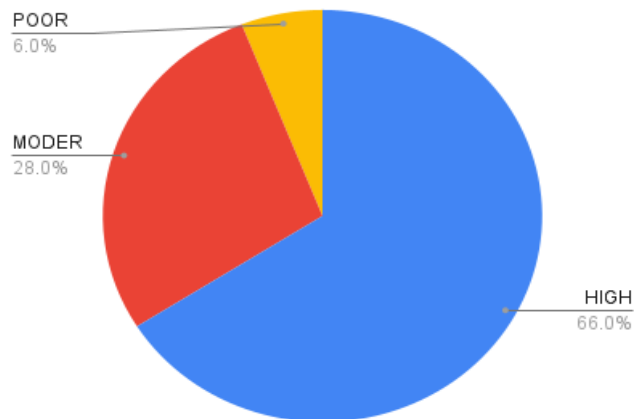
1. The learning objectives are clear and appropriate to the program.



2. The curriculum and syllabus are well organized and suitable to the program.

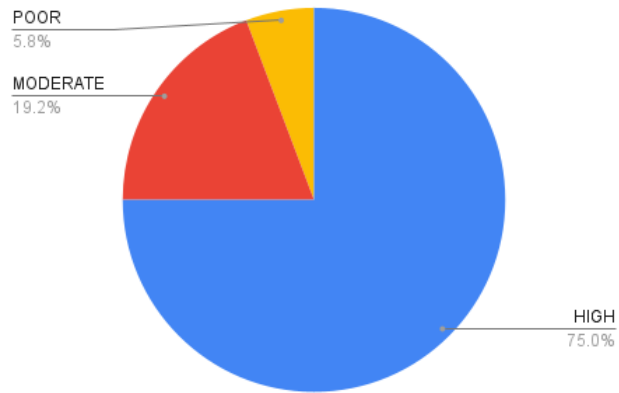


3. The text Books/Reference Books are well suited to the course.

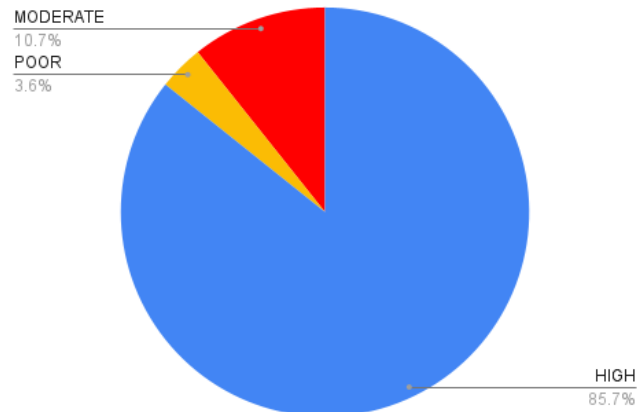


Center

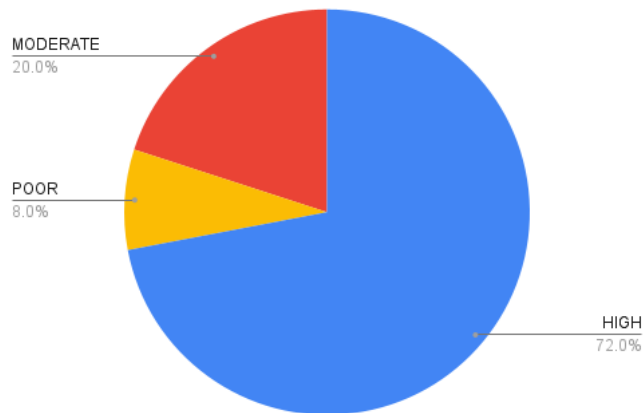
4. How do you rate the competencies/outcomes in relation to the course content?



5. Provision to update curriculum time to time.

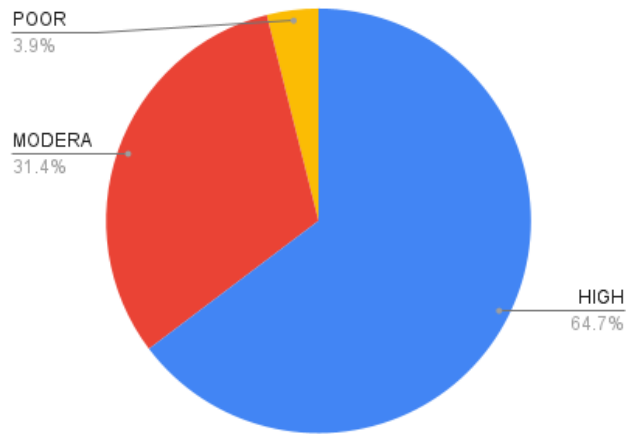


6. How do you rate the applicability of the domains and the tools used for designing the experiments in

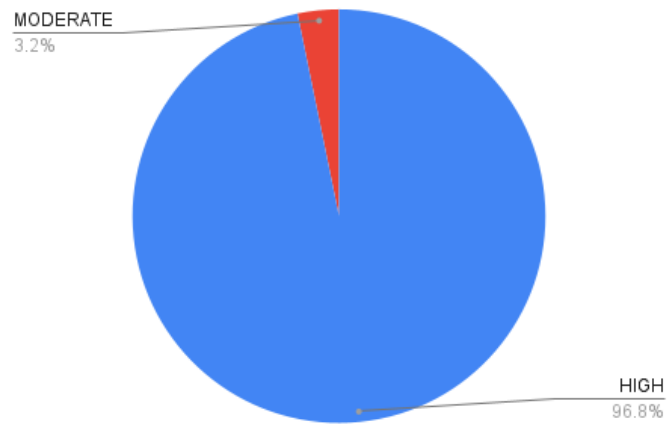


Center

7. The curriculum has a good balance between theory and practical.



8. How do you rate the electives offered in relation to the technological advancements?



Center

Priyadarshini College of Engineering
Department of Electronics & Power Engineering
Feedback Analysis
Alumni Feedback on Curriculum
Session 2020-21

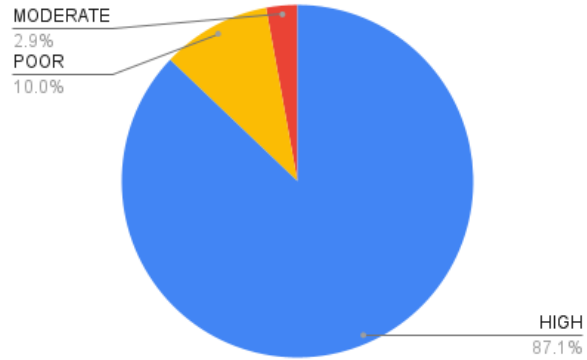
Number of alumni participated in the feedback = 103

Sr.No.	Particulars	Count of High (weight=3)	Count of Moderate (weight=2)	Count of Poor (weight=1)	Impact of Feedback
1	Curriculum meets prerequisite and basic knowledge required for the career.	81	14	8	2.71
2	Usefulness of learning experience in career.	80	18	5	2.73
3	Electives offered in relation to the technological advancements.	81	17	5	2.74
4	The new courses (subjects) Introduced meet contemporary (existing) requirements.	78	22	3	2.73
5	Design of the courses (subjects) encourages / motivates extra learning or self-learning.	86	10	7	2.77
6	How do you rate the competencies/outcomes in relation to the course content?	90	9	4	2.83
7	What other courses that you suggest to be included in the curriculum?	88	15	0	2.85

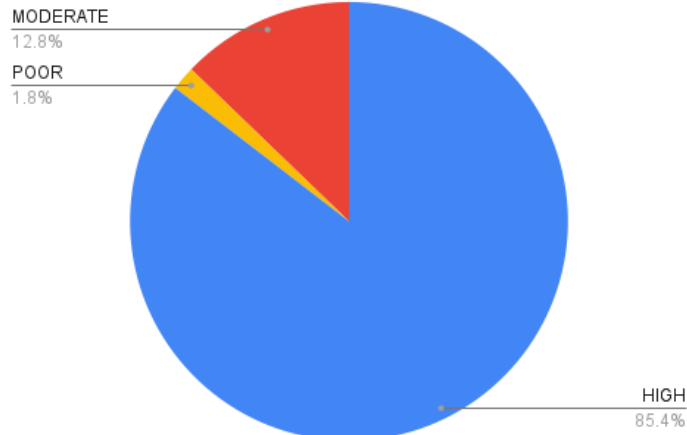


HOD

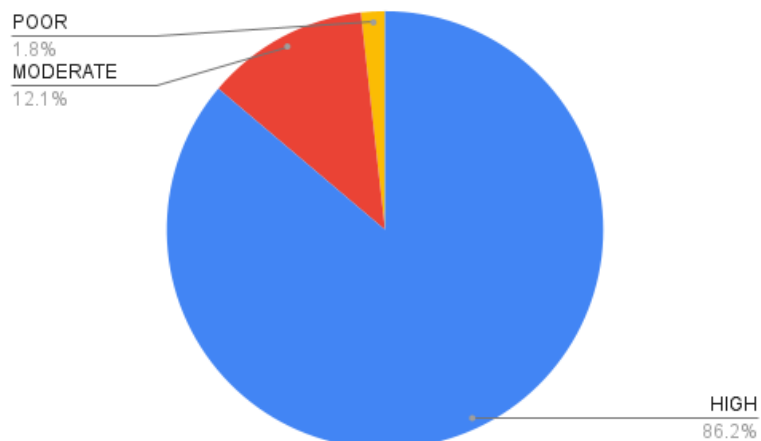
1. Curriculum meets prerequisite and basic knowledge required for the career.



2. Usefulness of learning experience in career.

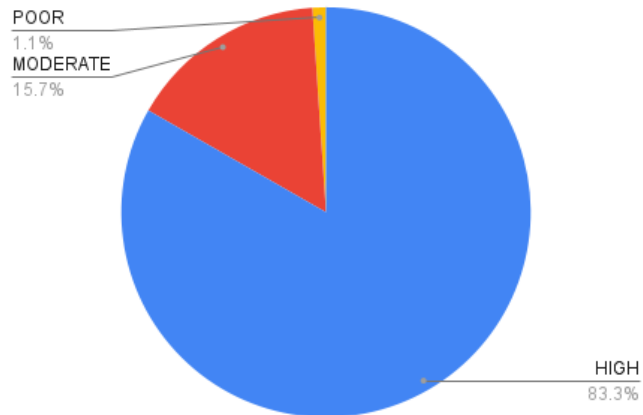


3. Electives offered in relation to the technological advancements.

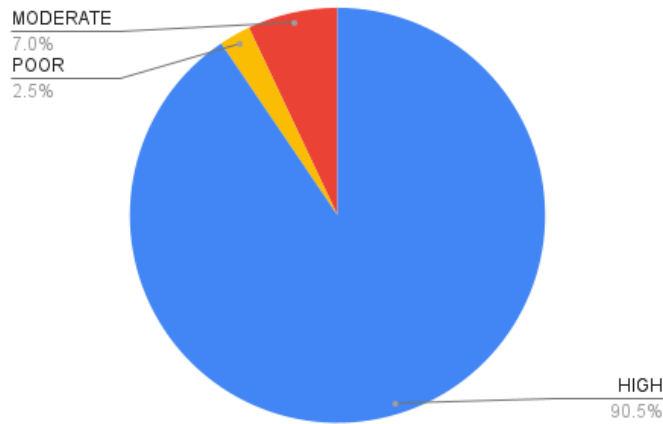


Center

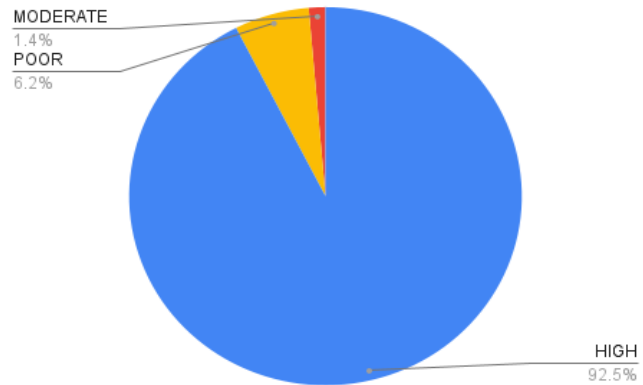
4. The new courses (subjects) Introduced meet contemporary (existing) requirements.



5. Design of the courses (subjects) encourages / motivates extra learning or self learning.

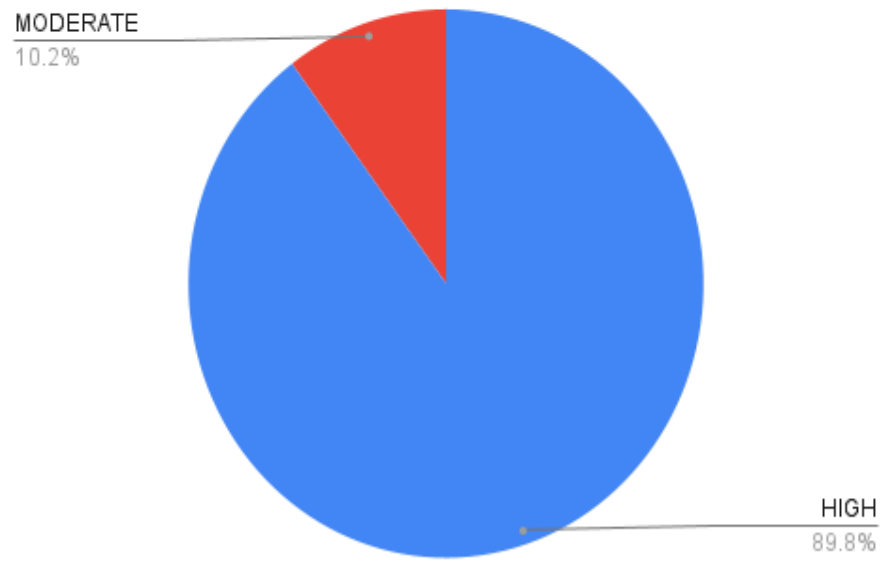


6. How do you rate the competencies/outcomes in relation to the course content?



Center

7. What other courses that you suggest to be included in the curriculum?



Center

Priyadarshini College of Engineering
Department of Electronics & Power Engineering

Feedback Analysis

Students Feedback on Curriculum

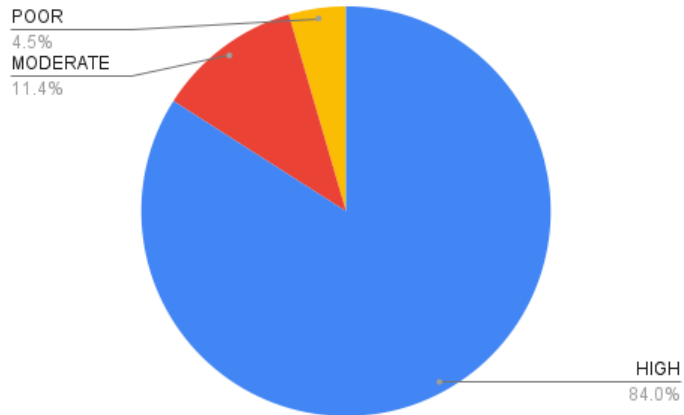
Session 2020-21

Number of Students participated in the feedback = 127

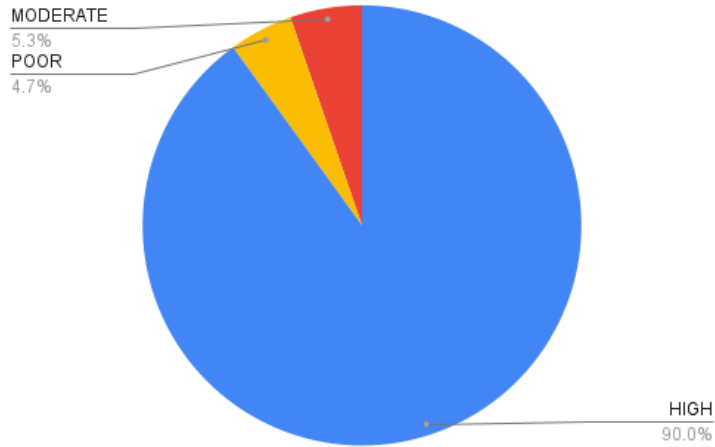
Sr.No.	Particulars	Count of High (weight=3)	Count of Moderate (weight=2)	Count of Poor (weight=1)	Impact of Feedback
1	The relevance of the courses (subjects) in the curriculum	93	19	15	2.61
2	The objectives stated for each of the course.	102	9	16	2.68
3	The offering of the electives in terms of their relevance to the specialized streams.	93	25	9	2.66
4	How do you rate the electives offered in relation to the technological advancements.	112	15	0	2.88
5	Content of the courses encourages extra learning / self-learning.	107	8	12	2.75
6	How do you rate the percentage (Number) of courses having practical components?	111	10	6	2.83
7	How do you rate the domain used for Designing/performing the experiments in the laboratory.	119	6	2	2.92


HOD

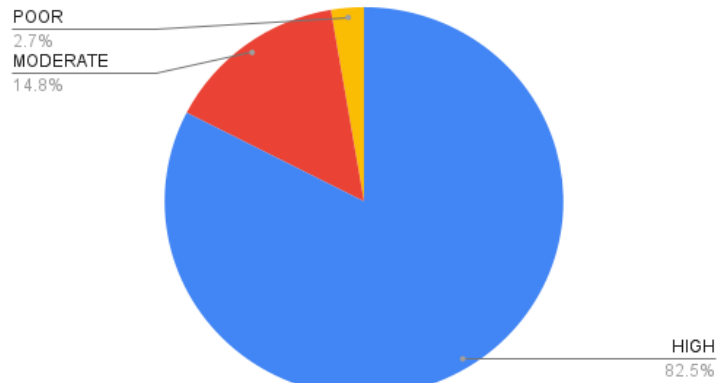
1. The relevance of the courses (subjects) in the curriculum



2. The objectives stated for each of the course.

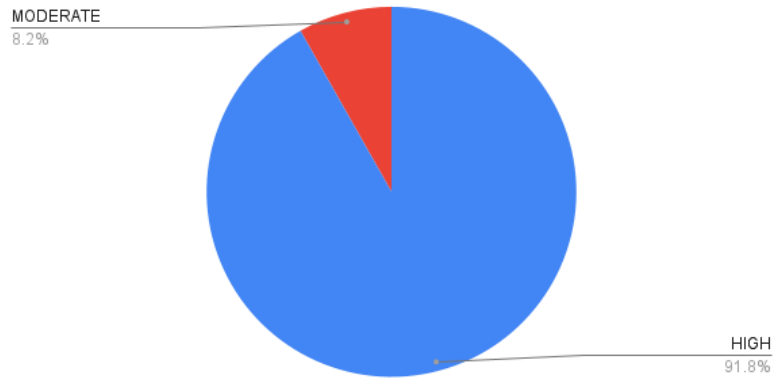


3. The offering of the electives in terms of their relevance to the specialized streams.

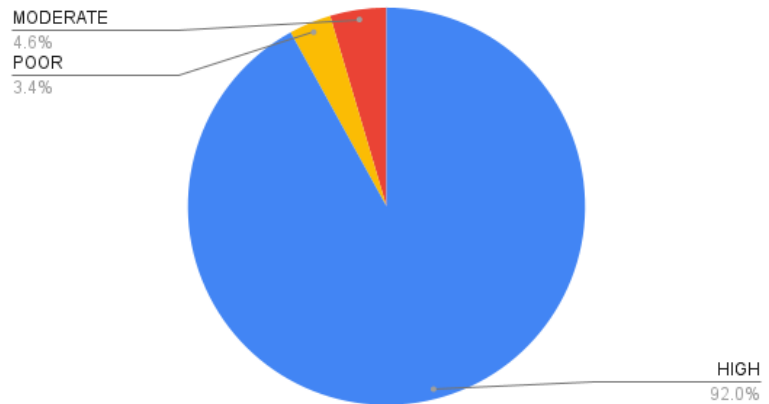


Center

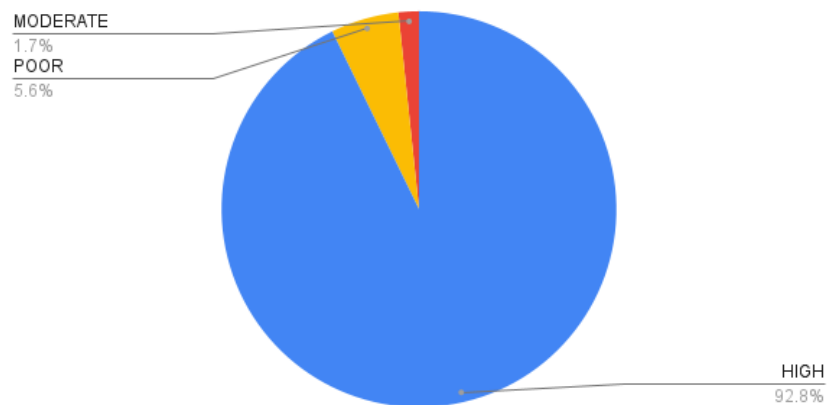
4. How do you rate the electives offered in relation to the technological advancements.



5. Content of the courses encourages extra learning / self learning.

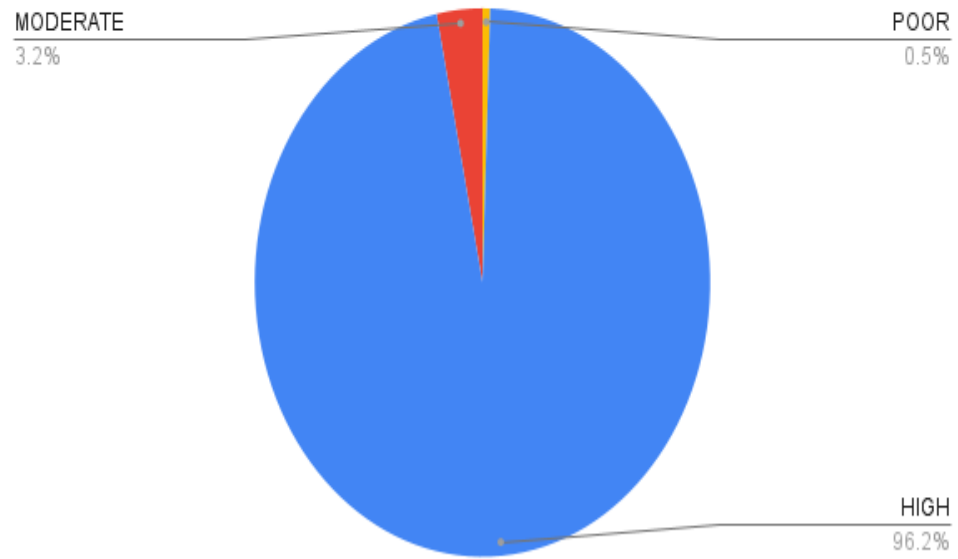


6. How do you rate the percentage (Number) of courses having practical components?



Center

7. How do you rate the domain used for Designing/performing the experiments in the laboratory.



HOD

Priyadarshini College of Engineering
Department of Electronics & Power Engineering
Feedback Analysis
Employer Feedback on Curriculum
Session 2020-21

Number of Employer participated in the feedback = 14

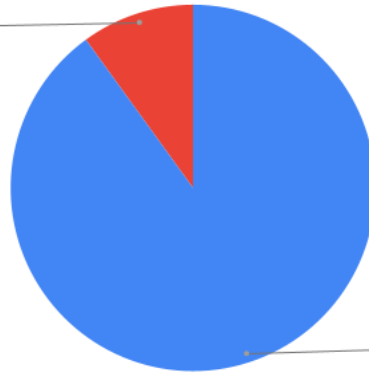
Sr.No.	Particulars	Count of High (weight=3)	Count of Moderate (weight=2)	Count of Poor (weight=1)	Impact of Feedback
1	How do you rate relevance of the courses in relation to the program?	12	2	0	2.86
2	How do you rate the sufficiency of the courses related to industry that are included in the program?	9	5	0	2.64
3	How do you rate the competencies/outcomes in relation to the course content?	12	2	0	2.86
4	How do you rate the relevance of the topics to the Industry?	11	3	0	2.79
5	Rate the offering of the subjects in relation to the specialization streams?	12	2	0	2.86
6	How do you rate the applicability of the domains and the tools used for designing the experiments in terms of existing practices in the Industry?	10	4	0	2.71
7	How do you rate the experiments in terms of their relevance to the real life application?	11	3	0	2.79
8	How do you rate the proficiency of our students working with you?	11	3	0	2.79
9	What other courses that you suggest to be included in the curriculum?	12	2	0	2.86



HOD, EP

1. How do you rate relevance of the courses in relation to the program?

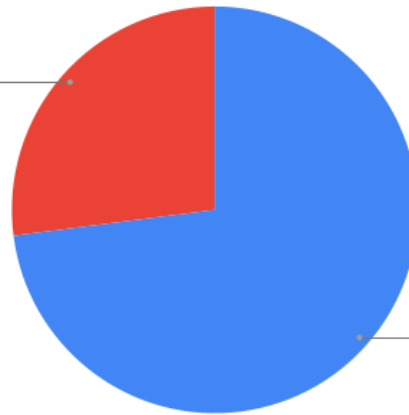
MODERATE
10.0%



HIGH
90.0%

2. How do you rate the sufficiency of the courses related to industry that are included in the program?

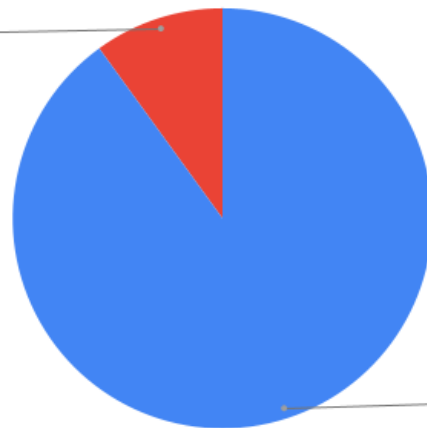
MODERATE
27.0%



HIGH
73.0%

3. How do you rate the competencies/outcomes in relation to the course content?

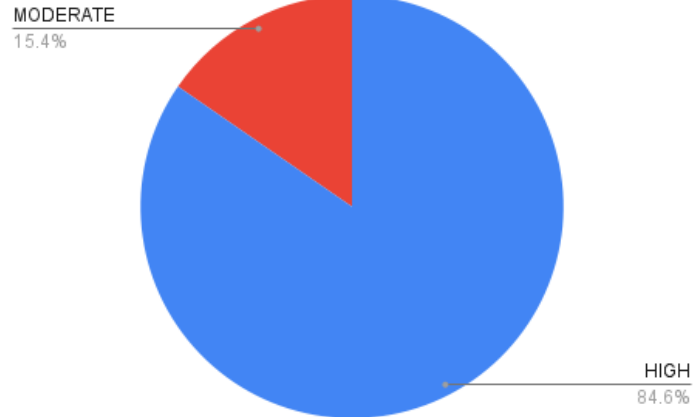
MODERATE
10.0%



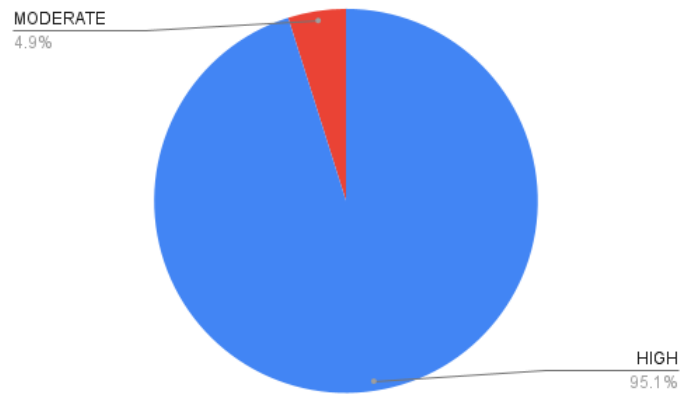
HIGH
90.0%

Center

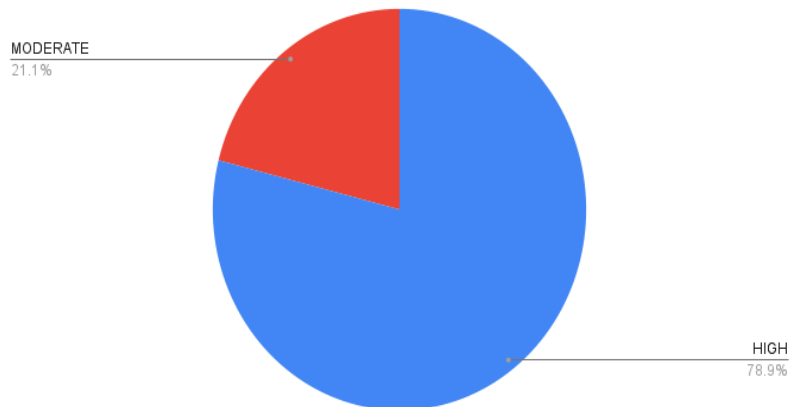
4. How do you rate the relevance of the topics to the Industry?



5. Rate the offering of the subjects in relation to the specialization streams?



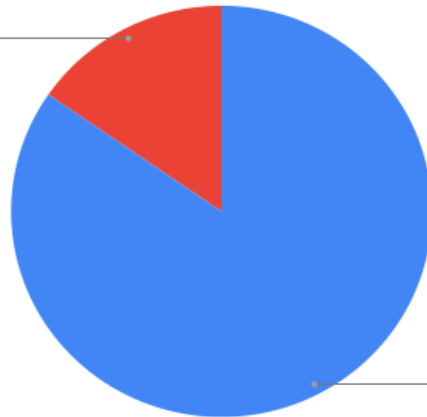
6. How do you rate the applicability of the domains and the tools used for designing the experiments in terms of existing practices in the Industry?



Center

7. How do you rate the experiments in terms of their relevance to the real life application?

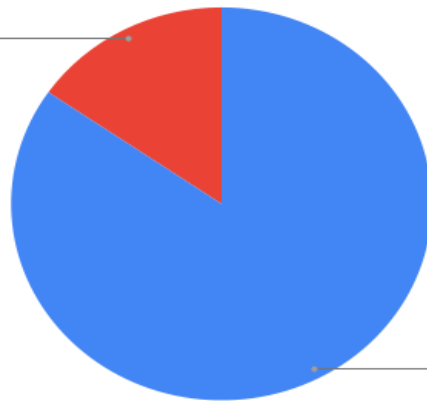
MODERATE
15.4%



HIGH
84.6%

8. How do you rate the proficiency of our students working with you?

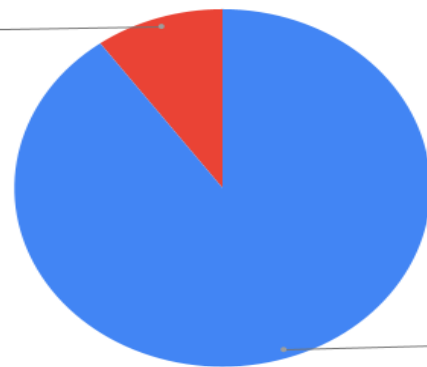
MODERATE
15.4%



HIGH
84.6%

9. What other courses that you suggest to be included in the curriculum?

MODERATE
10.0%



HIGH
90.0%

HOD,EP

mbsingh
Principal
Priyadarshini College of Eng.
Nagpur.



Lokmanya Tilak Jankalyan Shikshan Sanstha's
PRIYADARSHINI COLLEGE OF ENGINEERING

(Recognised by A.I.C.T.E., New Delhi & Govt. of Maharashtra, Affiliated to R.T.M.Nagpur University)
Near CRPF Campus, Hingna Road, Nagpur-440 019, Maharashtra (India)
Phone : 07104 – 236381, 237307, Fax : 07104 – 237681,
email : principal.pce.ngp@gmail.com, www.pcenagpur.edu.in



Department of Computer Technology

Stakeholders feedback Analysis

Session-2020-2021

Priyadarshini College of Engineering, Nagpur
Department of Computer Technology
Session-2020-2021
Impact Analysis Students Feedback on Curriculum

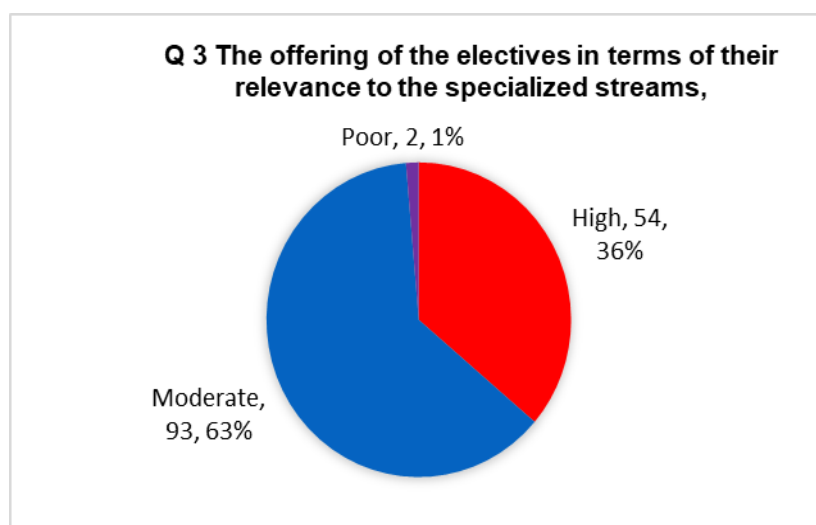
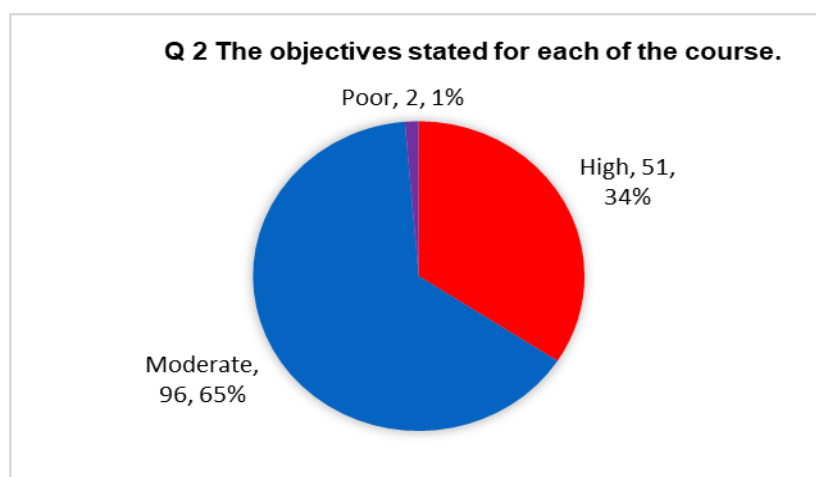
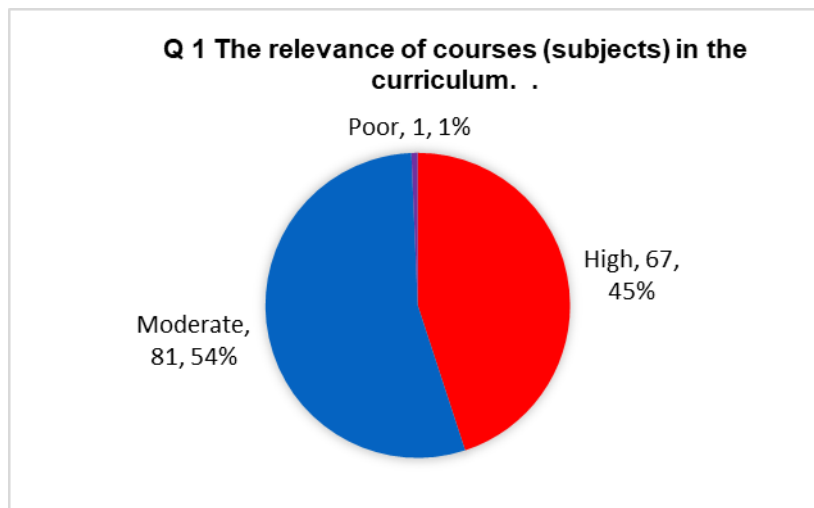
Number of student participated in the feedback = 149

Sr. No.	Feedback Point	High	Moderate	Poor	Impact Analysis
1	The relevance of courses (subjects) in the curriculum.	67	81	1	2.43
2	The objectives stated for each of the course.	51	96	2	2.32
3	The offering of the electives in terms of their relevance to the specialized streams,	54	93	2	2.34
4	How do you rate the electives offered in relation to the technological advancements?	62	84	3	2.39
5	Content of the courses encourages extra learning/self learning.	78	69	2	2.51
6	How do you rate the percentage (Number) of courses having practical components ?	79	70	0	2.53
7	How do you rate the domain used for Designing/performing the experiments in the laboratory.	65	80	4	2.40
Overall Impact : 2.41					

Mheval

HOD,CT

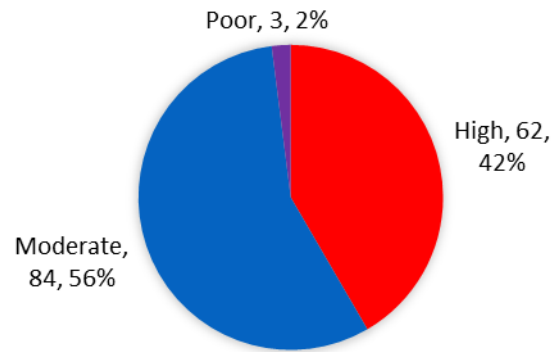
Impact Analysis Students Feedback on Curriculum



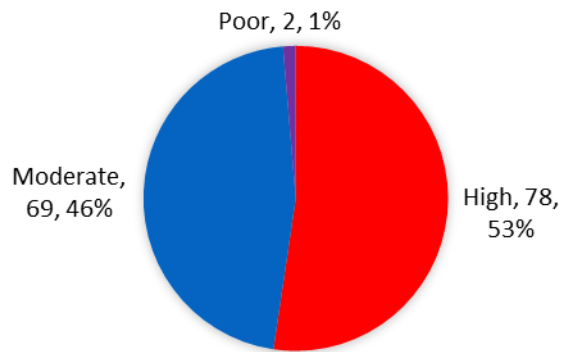
Sheela

HOD. CT

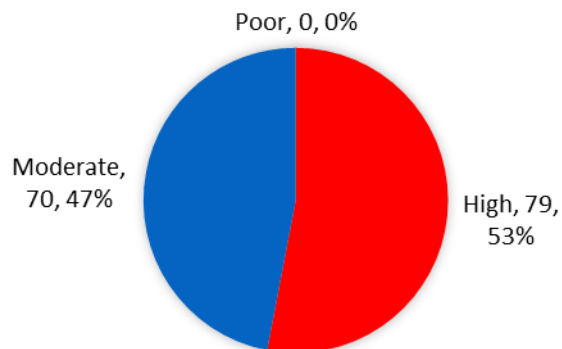
Q 4 How do you rate the electives offered in relation to the technological advancements?



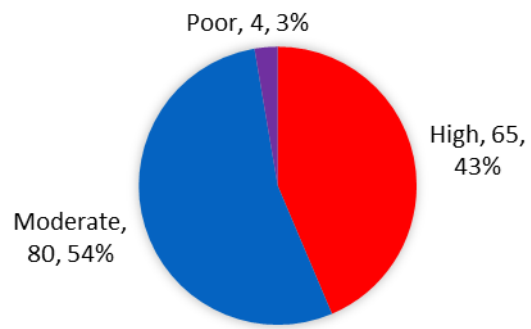
Q 5 Content of the courses encourages extra learning/self learning.



Q 6 How do you rate the percentage (Number) of courses having components ?



Q 7 How do you rate the domain used for Designing/performing the experiments in the laboratory.



M. Hossain

HOD. CT

Priyadarshini College of Engineering, Nagpur
Department of Computer Technology
Session-2020-2021
Impact Analysis- Alumni Feedback on Curriculum

Number of Alumni participated in the feedback = 31

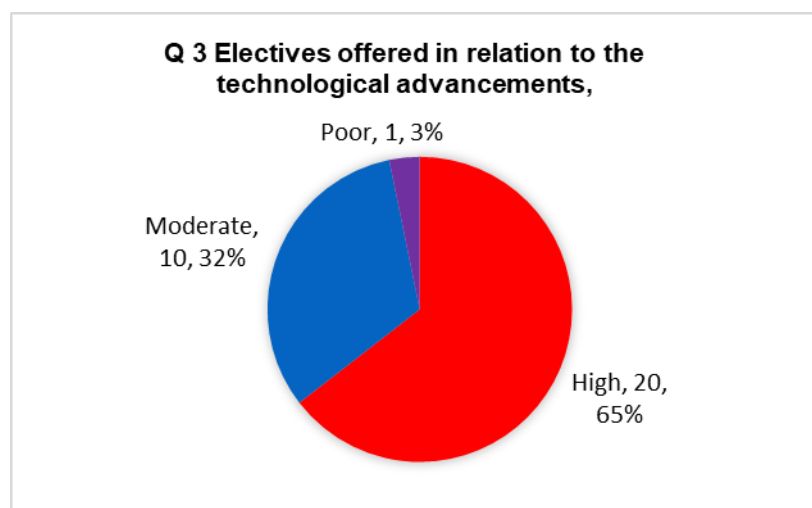
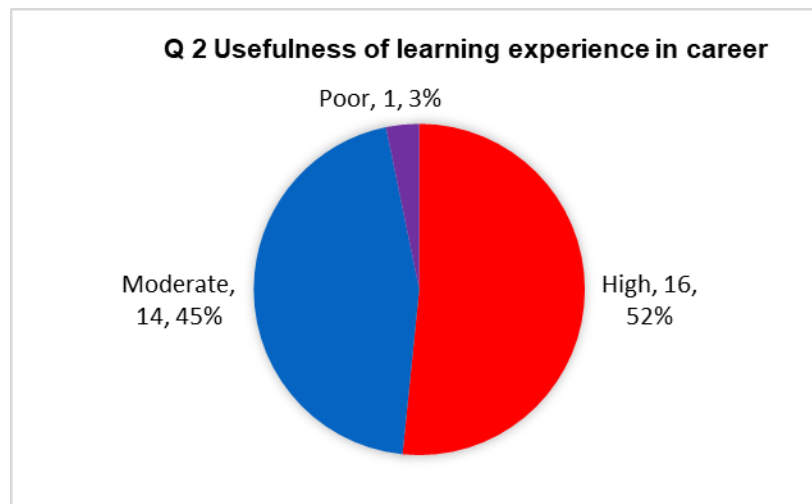
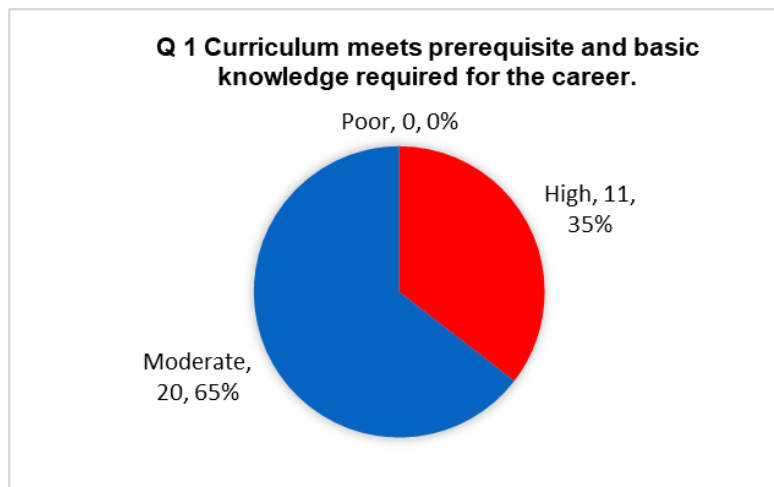
Sr. No.	Particulars	Count of High (weight=3)	Count of Moderate (weight=2)	Count of Poor (weight=1)	Impact of Feedback
1	Curriculum meets prerequisite and basic knowledge required for the career.	11	20	00	2.35
2	Usefulness of learning experience in career.	16	14	01	2.48
3	Electives offered in relation to the technological advancements,	20	10	01	2.61
4	The new courses (subjects) introduced meet contemporary (existing) requirements.	19	11	01	2.58
5	Design of the courses (subjects) encourage/motivates extra learning or self learning.	17	14	00	2.54
6	How do you rate the competencies/outcomes in relation to the course contents ?	21	09	01	2.64
7	What other courses that you suggest to be included in curriculum ?	16	15	00	2.52
Overall Impact= 2.513					

M. H. H. H.

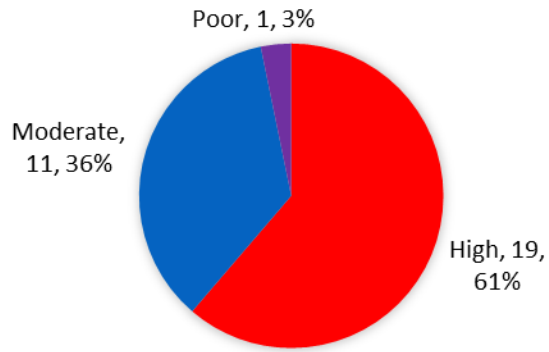
HOD,CT

Impact Analysis Alumni Feedback on Curriculum

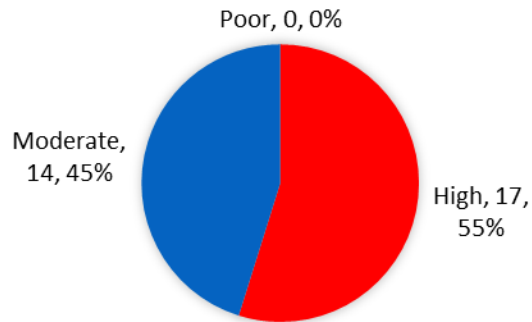
Number of Alumni participated in the feedback = 31



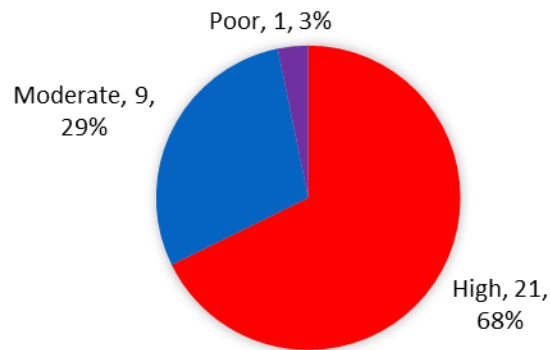
Q 4 The new courses (subjects) introduced meet contemporary (existing) requirements,



Q 5 Design of the courses (subjects) encourage/motivates extra learning or self learning



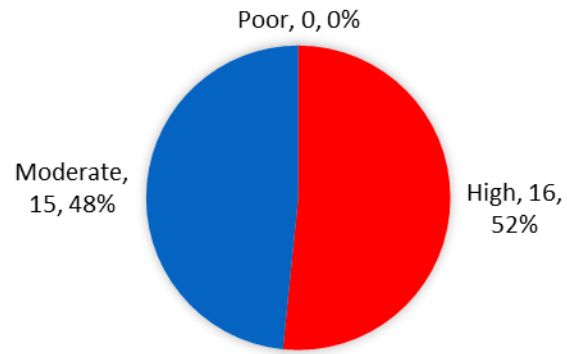
Q 6 How do you rate the competencies/outcomes in relation to the course contents ?



Ahmed

HOD. CT

Q 7 What other courses that you suggest to be included in curriculum ?



Abhishek

HOD. CT

Priyadarshini College of Engineering, Nagpur
Department of Computer Technology
Session-2020-2021
Impact Analysis- Teachers Feedback on Curriculum

Number of Teachers participated in the feedback = 23

Sr. No.	Particulars	Count of High (weight=3)	Count of Moderate (weight=2)	Count of Poor (weight=1)	Impact of Feedback
1	The learning objectives are clear and appropriate to the program.	18	5	00	2.78
2	The curriculum and syllabus are well organized and suitable to the program.	19	4	00	2.82
3	The test books /reference books are well suited to the course.	20	3	00	2.86
4	How do you rate the competencies in relation to the course contents ?	19	4	0	2.82
5	Provision to update curriculum time to time.	14	8	01	2.56
6	How do you rate the applicability of the domains and the tools used for designing and experiments in terms of existing practices in the industry ?	16	5	02	2.6
7	The curriculum has good balance between theory and practical.	16	5	02	2.6
8	How do you rate the electives offered in relation to the technological advancements.	15	5	03	2.52
Overall Impact= 2.69					

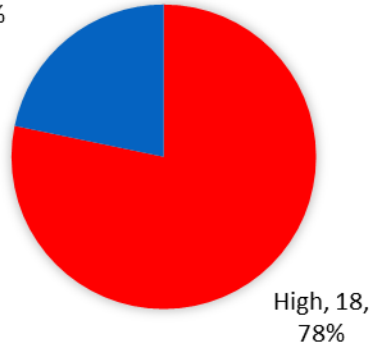
Ahmed

HOD. CT

Impact Analysis- Teachers Feedback on Curriculum

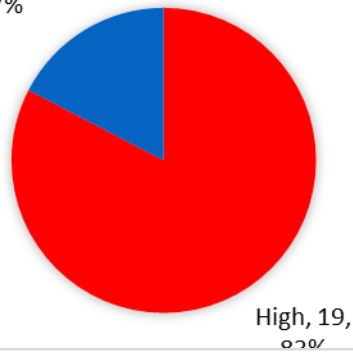
Q 1 The learning objectives are clear and appropriate to the program.?

Moderate, 5, 22% Poor, 0, 0%



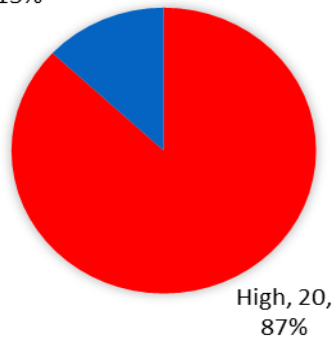
Q 2 The curriculum and syllabus are well organized and suitable to the program.

Moderate, 4, 17% Poor, 0, 0%



Q 3 The test books /reference books are well suited to the course..

Moderate, 3, 13% Poor, 0, 0%

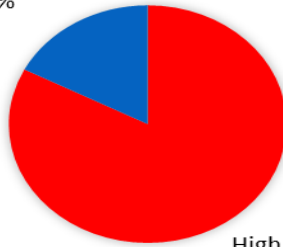


M. H. ...

HOD. CT

Q 4 The test books /reference books are well suited to the courseHow do you rate the competencies in relation to the course contents ?

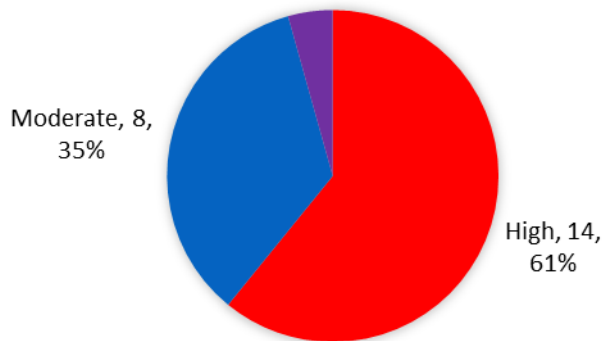
Moderate, 4, 17% Poor, 0, 0%



High, 19, 83%

Q 5 Provision to update curriculum time to time.

Poor, 1, 4%

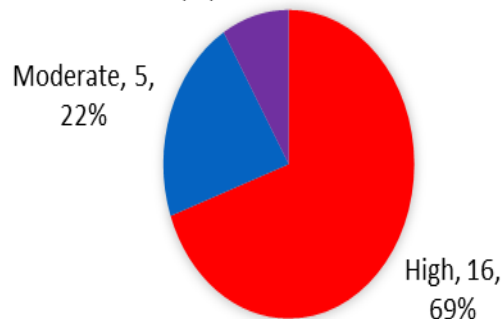


Moderate, 8, 35%

High, 14, 61%

Q 6 How do you rate the applicability of the domains and the tools used for designing and experiments in terms of existing practices in the industry ?

Poor, 2, 9%

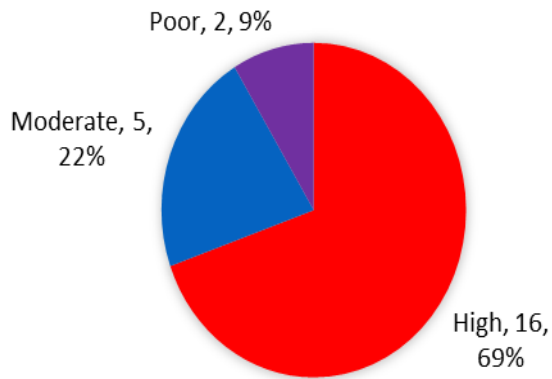


Moderate, 5, 22%

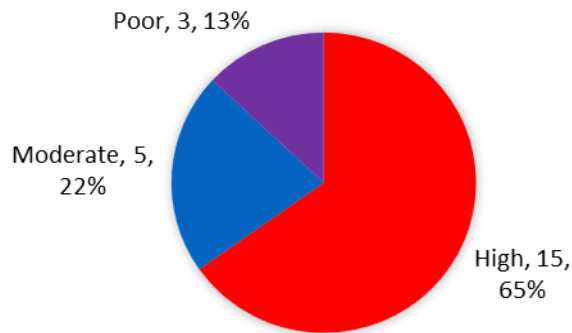
High, 16, 69%

M. Shree

Q 7 The curriculum has good balance between theory and practical.



Q 8 How do you rate the electives offered in relation to the technological advancements.



mpsingh
Principal
Priyadarshini College of Eng.
Nagpur.

Ashwini
HOD. CT



Lokmanya Tilak Jankalyan Shikshan Sanstha's

PRIYADARSHINI COLLEGE OF ENGINEERING

(Recognised by A.I.C.T.E., New Delhi & Govt. of Maharashtra, Affiliated to R.T.M.Nagpur University)

Near CRPF Campus, Hingna Road, Nagpur-440 019, Maharashtra (India)

Phone : 07104 – 236381, 237307, Fax : 07104 – 237681,

email : principal.pce.ngp@gmail.com, www.pcenagpur.edu.in



Department of Information Technology

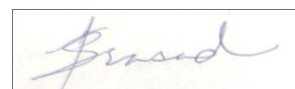
Stakeholders feedback Analysis

Session-2020-2021

Priyadarshini College of engineering
Department of Information Technology
Feedback Analysis
Student Feedback on Curriculum
Session 2020-21

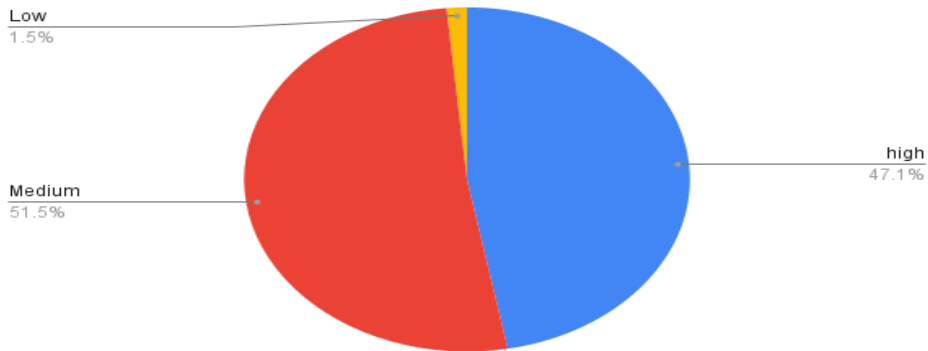
Number of Student participated in the feedback = 68

Sr.No	Particulars	Count of High (weight=3)	Count of Moderate (weight=2)	Count of Poor (weight=1)	Impact of feedback
1	The relevance of courses (subject) in the curriculum	32	35	1	2.45
2	The objectives stated for each of the course	32	34	2	2.44
3	The offering of the electives in terms of their relevance to the specialized streams	32	34	2	2.44
4	How do you rate the electives offered in relation to the technological advancement	32	29	7	2.29
5	Content of the courses encourages extralearning/self-learning	33	32	3	2.44
6	How do you rate the percentage(number) of courses having practical components?	30	33	5	2.36
7	How do you rate the domain used for designing/performing the experiments in the laboratory.	27	33	8	2.27

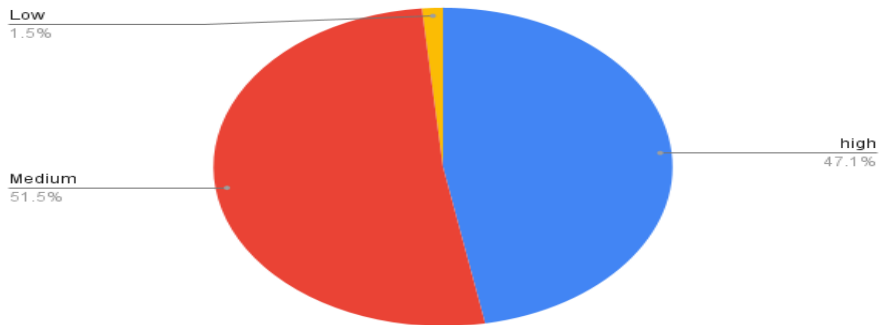


HOD

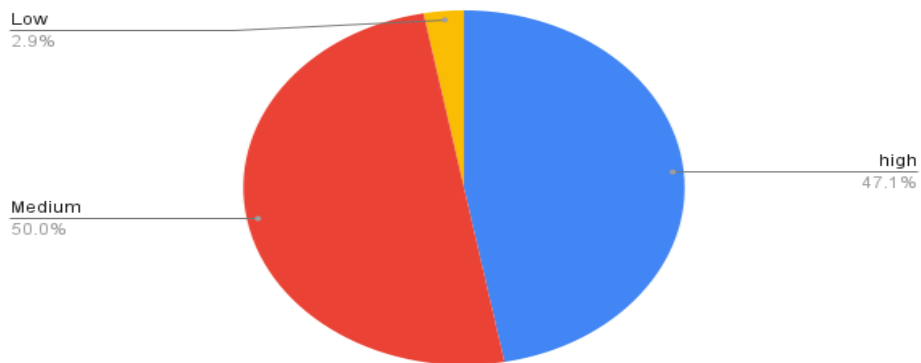
Count of 1. The relevance of courses (subjects) in the curriculum.



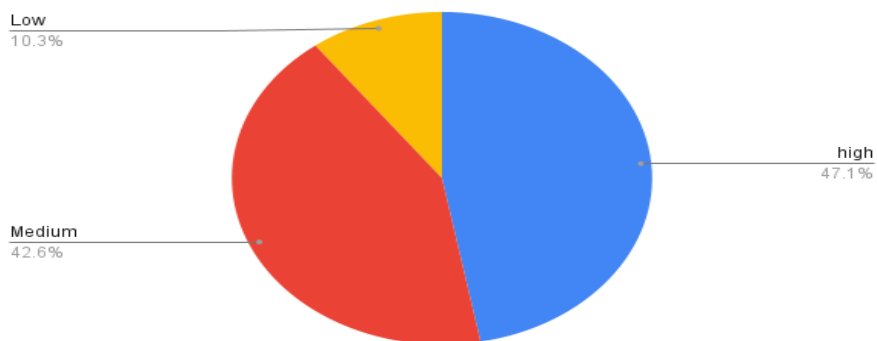
Count of 2. The objectives stated for each of the course



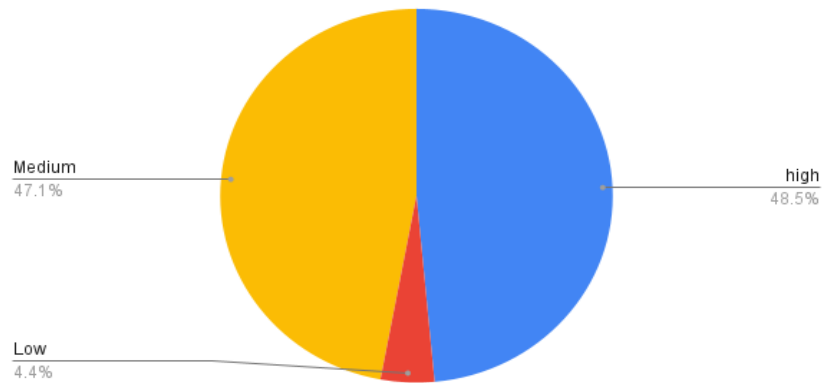
Count of 3. The offering of the electives in terms of their relevance to the specialized streams.



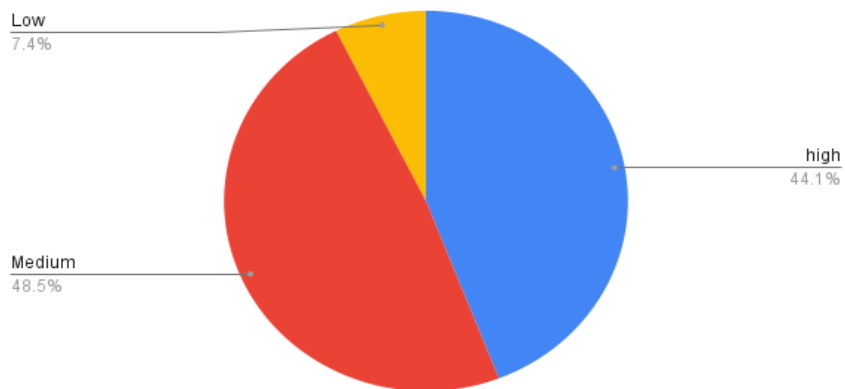
Count of 4. How do you rate the electives offered in relation to the technological advancement.



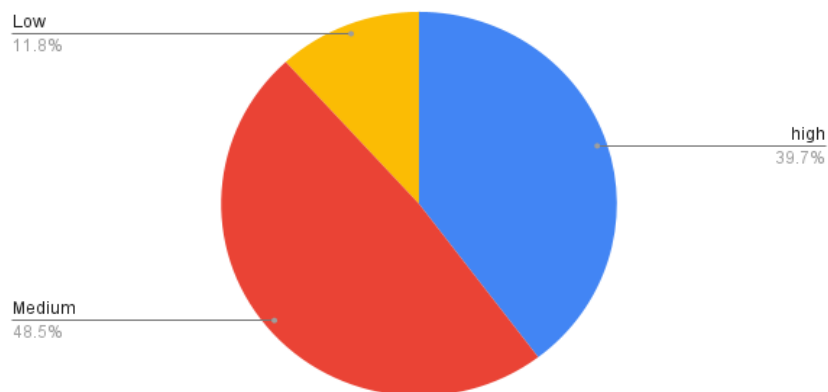
Count of 5. Content of the courses encourages extra learning/self-learning.



Count of 6. How do you rate the percentage (number) of courses having practical components?



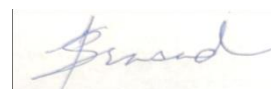
Count of 7. How do you rate the domain used for designing/performing the experiments in the laboratory.



Priyadarshini College of engineering
Department of Information Technology
Feedback Analysis
Alumni Feedback on Curriculum
Session 2020-21

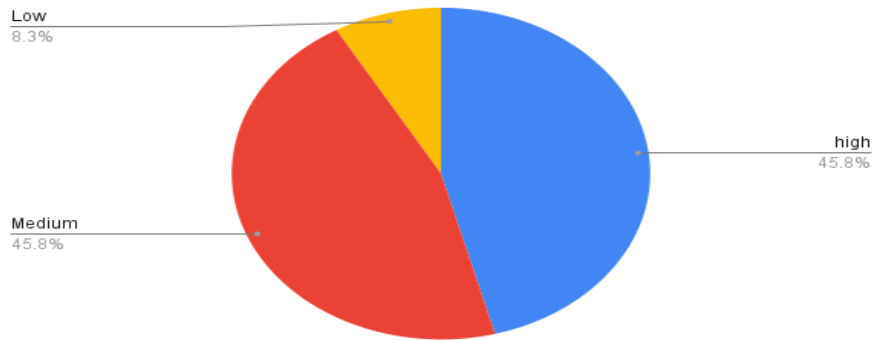
Number of alumni participated in the feedback = 22

Sr.No	Particulars	Count of High (weight=3)	Count of Moderate (weight=2)	Count of Poor (weight=1)	Impact of feedback
1	Curriculum meets prerequisite and basic knowledge required for the career	10	11	1	2.44
2	Usefulness of learning experience in career	11	12	0	2.45
3	Elective offered in relation to the technological advancements.	11	11	0	2.5
4	The new courses(subjects) encourages/motives extra learning/ self-learning.	8	12	2	2.27
5	Design of the courses (subjects) encourages/motivates extra learning/ self-learning.	11	8	3	2.36
6	How do you rate the competencies/outcomes in relation to the courses contents?	10	10	2	2.36
7	What other courses that you suggest to be included in the curriculum?	9	12	1	2.36

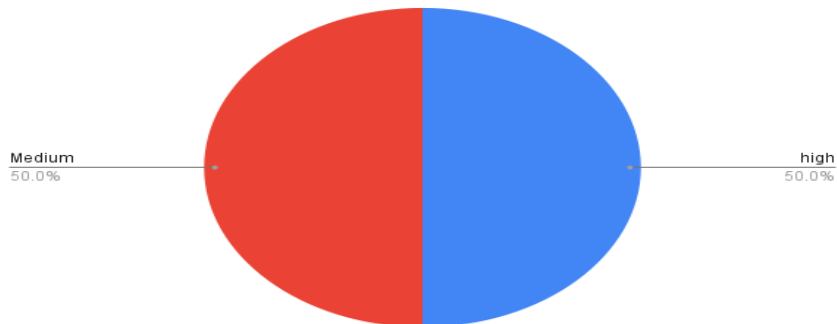


HOD, IT

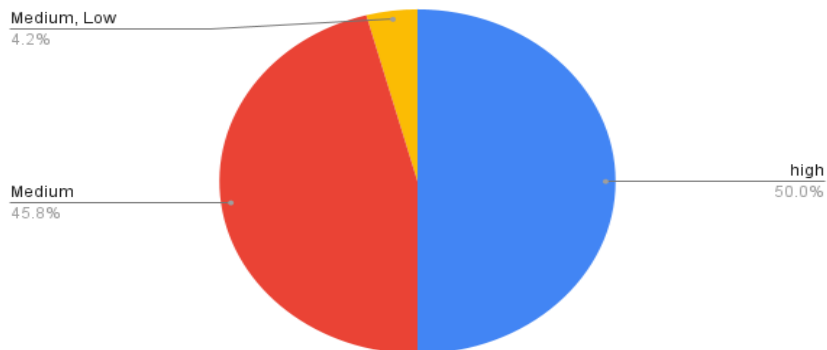
Count of 1. Curriculum meets prerequisite and basic knowledge required for the career



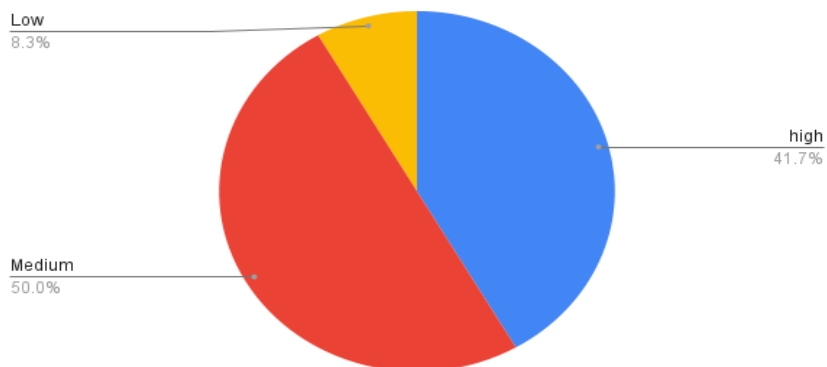
Count of 2. Usefulness of learning experience in career.



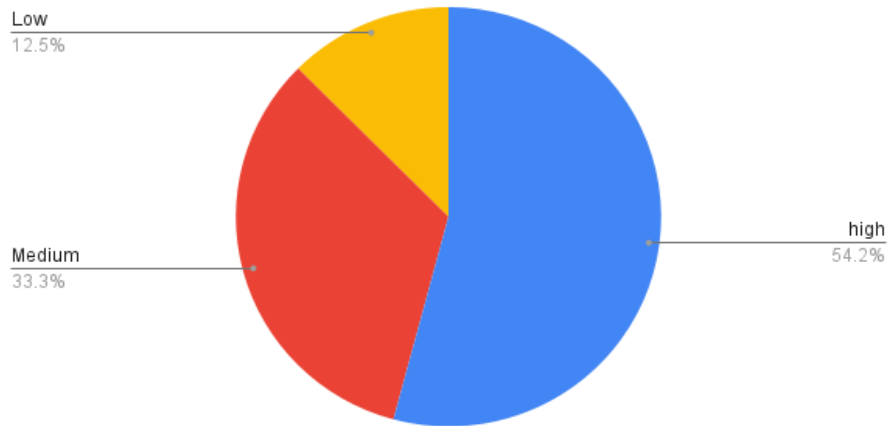
Count of 3. Electives offered in relation to the technological advancements.



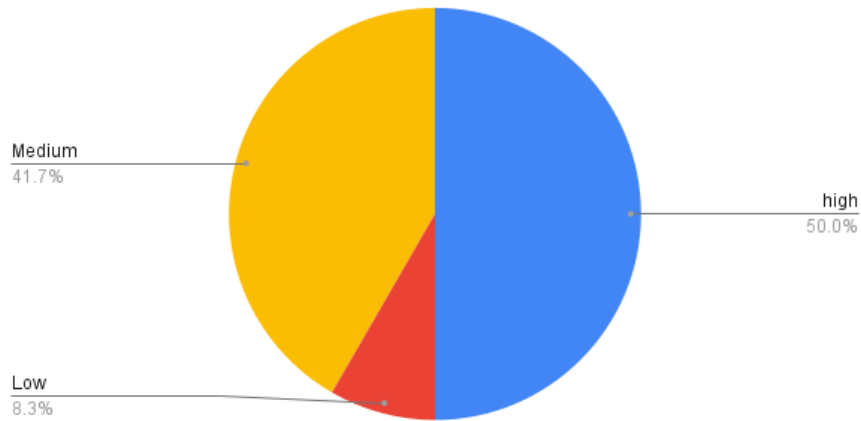
Count of 4. The new courses (subjects) introduced meet contemporary (existing) requirements.



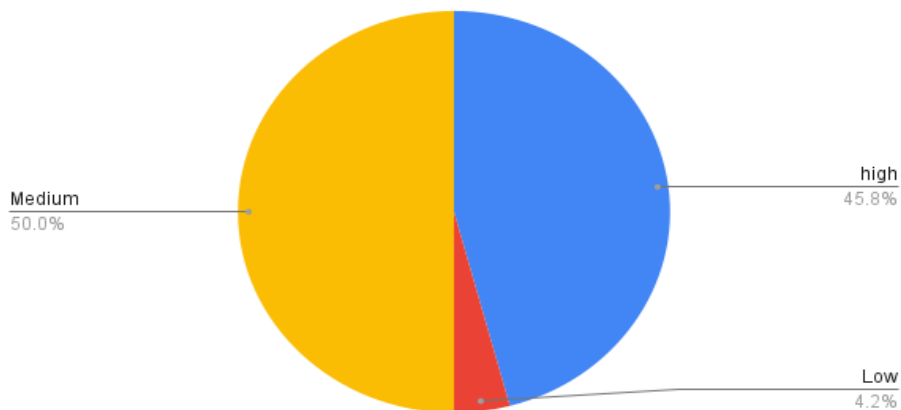
Count of 5. Design of the courses (subjects) encourages/motivates extra learning/self-learning.



Count of 6. How do you rate the competencies/outcomes in relation to the courses contents?



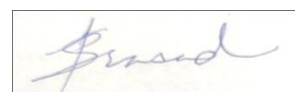
Count of 7. What other courses that you suggest to be included in the curriculum?



Priyadarshini College of engineering
Department of Information Technology
Feedback Analysis
Employers Feedback on Curriculum
Session 2020-21

Number of employers participated in feedback=02

S.N	Particulars	Count of High (weight=3)	Count of Moderate (weight=2)	Count of Poor (weight=1)	Impact of feedback
1	How do you rate relevance of the courses in relation to the program	2	0	0	3
2	How do you rate the sufficiency of the courses related to industry that are included in the program.	1	1	0	2.5
3	How do you rate the competencies/outcomes in relation to the course content.	1	1	0	2.5
4	How do you rate the relevance of the topics to the industry.	2	0	0	3
5	Rate the offering of the subjects in relation to the specialization stream.	2	0	0	3
6	How do you rate the applicability of the domains and the tools used for designing the experiments in terms of existing practices in the industry?	1	1	0	2.5
7	How do you rate the experiments in terms of their relevance to the real life application?	0	2	0	2
8	How do you rate the proficiency of our students working with you?	1	1	0	2.5
9	What other courses that you suggest to be included in the curriculum?	1	1	0	2.5

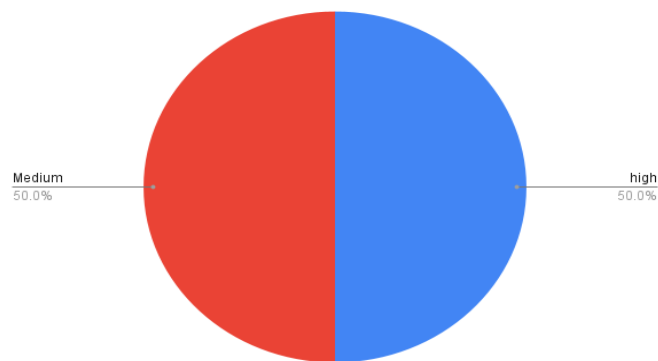


HOD IT

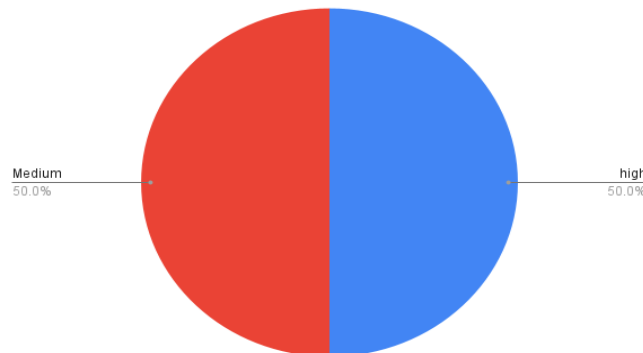
1. How do you rate relevance of the courses in relation to the program



2. How do you rate the sufficiency of the courses related to industry that are included in the program.



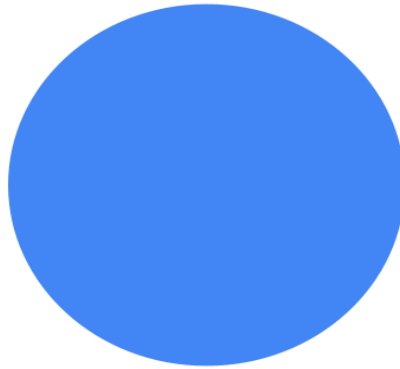
3. How do you rate the competencies/outcomes in relation to the course content.



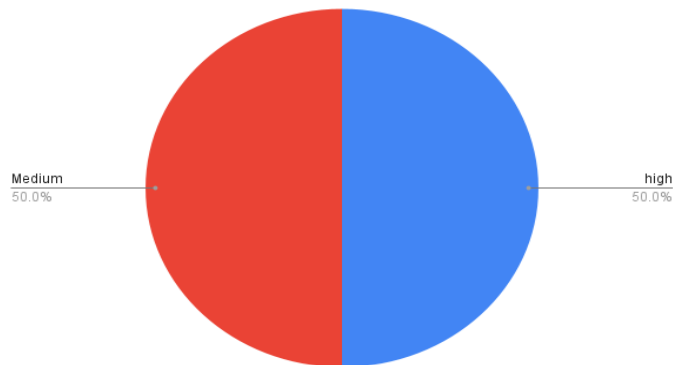
4. How do you rate the relevance of the topics to the industry.



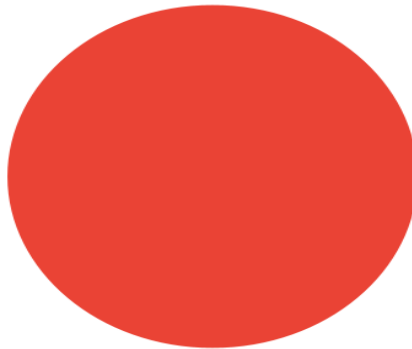
5. Rate the offering of the subjects in relation to the specialization stream.



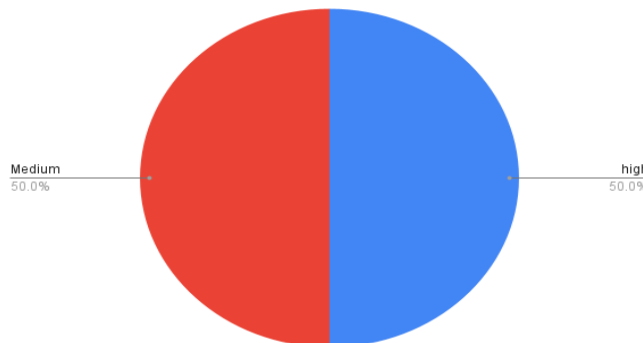
6. How do you rate the applicability of the domains and the tools used for designing the experiments in terms of existing practices in the industry?



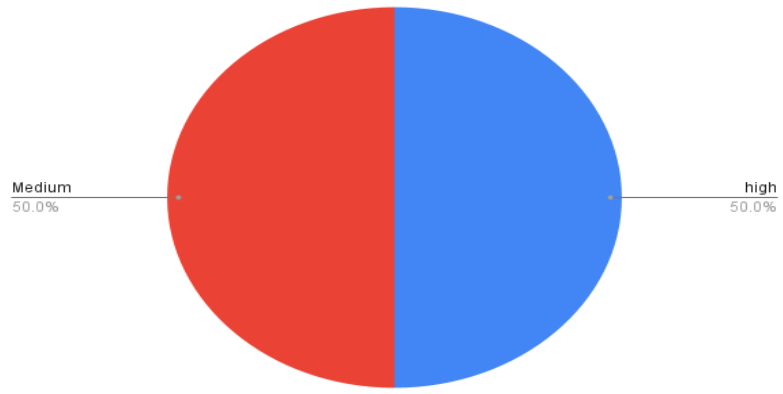
7. How do you rate the experiments in terms of their relevance to the real life application?



8. How do you rate the proficiency of our students working with you?



9. What other courses that you suggest to be included in the curriculum?



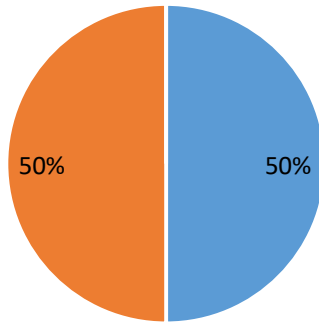
Priyadarshini College of engineering
Department of Information Technology
Feedback Analysis
Teachers Feedback on Curriculum
Session 2020-21

Number of Teachers participated in feedback=04

S.N.	Particulars	Count of High (weight=3)	Count of Moderate (weight=2)	Count of Poor (weight=1)	Impact of feedback
1	The learning objective are clear and appropriate to the program	2	2	0	2.5
2	The curriculum and syllabus are well organized and suitable to the program.	2	2	0	2.5
3	The text books/ reference books are well suited to the course	1	3	0	2.25
4	How do you rate the competencies/ outcomes in relation to the course content?	0	3	1	1.5
5	Provision to update curriculum time to time.	1	3	0	2.25
6	How do you rate the applicability of domains and the tools used for designing the experiments in terms of existing practices in the industry?	0	4	0	2
7	The curriculum has a good balance between theory and practical.	1	2	1	2.2
8	how do you rate the elective offered in relation to the technological advancements.	2	2	0	2.5

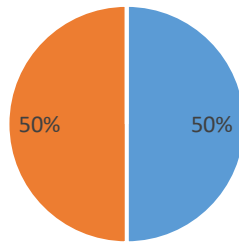
HOD

1. Learning Objective



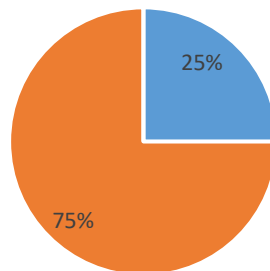
■ Count of High (weight=3) ■ Count of Moderate (weight=2) ■ Count of Poor (weight=1)

2. Curriculum and Syllabus



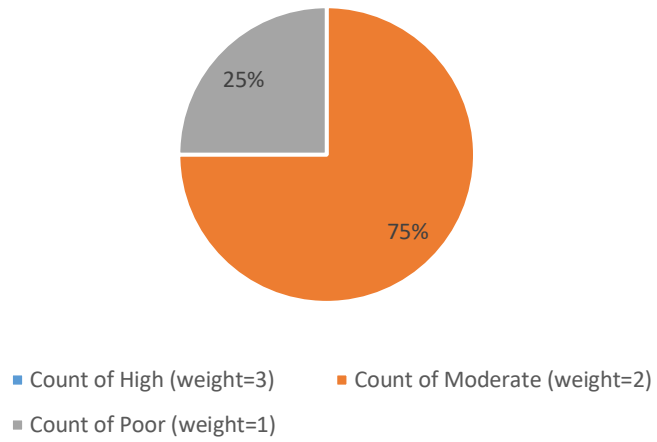
■ Count of High (weight=3) ■ Count of Moderate (weight=2)
■ Count of Poor (weight=1)

3. Text books/reference books are well suited to the course

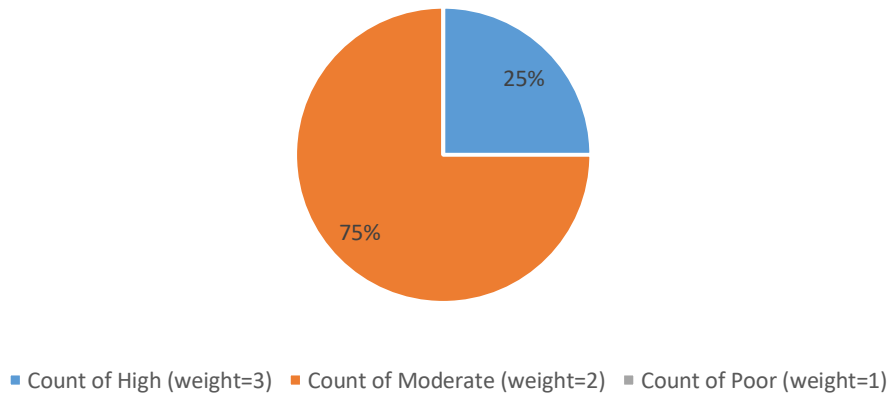


■ Count of High (weight=3) ■ Count of Moderate (weight=2)
■ Count of Poor (weight=1)

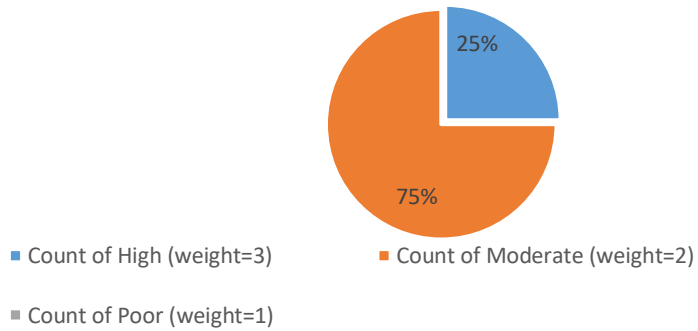
4. Rate the competencies/ outcomes in relations



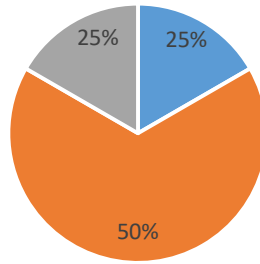
5. Provision to update curriculum time to time.



6. Rate the applicability of domains and the tools used for designing the experiments.

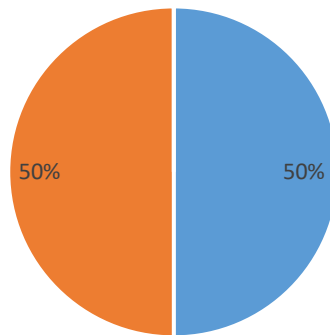


7. The curriculum has a good balance between theory and practical



■ Count of High (weight=3) ■ Count of Moderate (weight=2) ■ Count of Poor (weight=1)

8. Rate the elective offered in relation



■ Count of High (weight=3) ■ Count of Moderate (weight=2) ■ Count of Poor (weight=1)

Dr.P.S.Prasad
HOD

m.p.singh
Principa
Priyadarshini College of Engg.
Nagpur.



Lokmanya Tilak Jankalyan Shikshan Sanstha's

PRIYADARSHINI COLLEGE OF ENGINEERING

(Recognised by A.I.C.T.E., New Delhi & Govt. of Maharashtra, Affiliated to R.T.M.Nagpur University)

Near CRPF Campus, Hingna Road, Nagpur-440 019, Maharashtra (India)

Phone : 07104 – 236381, 237307, Fax : 07104 – 237681,

email : principal.pce.ngp@gmail.com, www.pcenagpur.edu.in



Department of Aeronautical Engineering

Stakeholders feedback Analysis

Session-2020-2021

Priyadarshini College of Engineering

Department of Aeronautical Engineering

Feedback Analysis

Student Feedback on Curriculum

Session 2020-21

Number of Students participated in the feedback = 52

Sr. No	Particulars	Count of High (Wight=3)	Count of Moderate (Wight=2)	Count of poor (Wight=1)	Impact of Feedback
1	The relevance of the course (subjects) in the curriculum	27	24	1	2.5
2	The objectives stated for each of the course	29	22	1	2.53
3	The offering of the electives in terms of their relevance to the specialized streams.	22	25	5	2.32
4	How do you rate the electives offered in relation to the technological advancements.	21	27	4	2.32
5	Content of the course encourages extra learning/self-learning.	22	27	3	2.36
6	How do you rate the percentage (Number) of courses having practical components?	22	26	4	2.34
7	How do you rate the domain used for Designing /performing	16	30	6	2.1

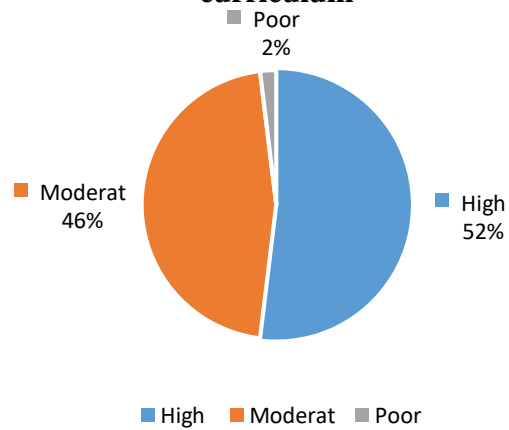


Dr. G. Mehta

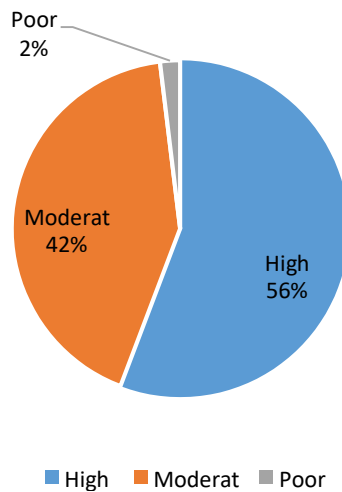
Head, Aero Dept,

PCE, Nagpur

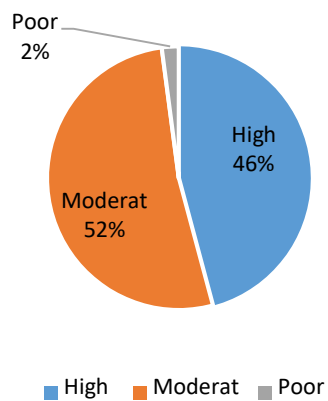
1) The relevance of the course (subjects) in the curriculum



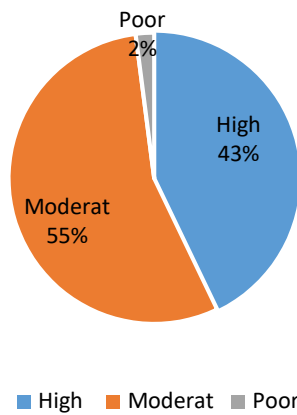
2) The objectives stated for each of the course



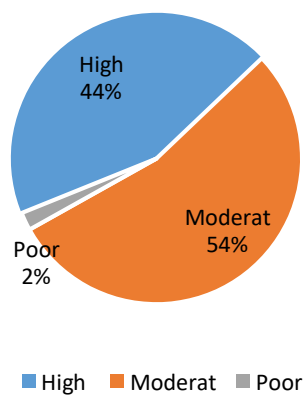
3) The offering of the electives in terms of their relevance to the specialized streams.



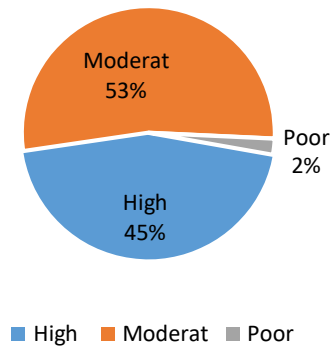
4)How do you rate the electives offered in relation to the technological advancements.



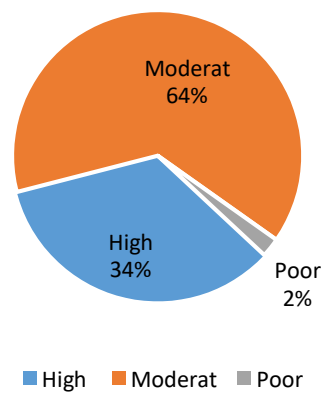
5) Content of the course encourages extra learning/self-learning



6) How do you rate the percentage (Number) of courses having practical components?



7) How do you rate the domain used for Designing /performing



Priyadarshini College of Engineering

Department of Aeronautical Engineering

Feedback Analysis

Alumni Feedback on Curriculum

Session 2020-21

Number of Alumni participated in the feedback = 27

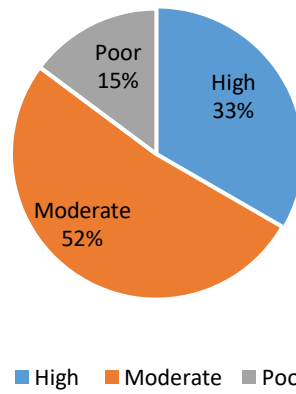
Sr. No	Particulars	Count of High (Wight=3)	Count of Moderate (Wight=2)	Count of poor (Wight=1)	Impact of Feedback
1	Curriculum Meets prerequisite and basic knowledge required for the career.	9	14	4	2.18
2	Usefulness of learning experience in the career	10	15	2	2.29
3	Electives offered in relation to the technological advancements.	9	15	3	2.22
4	The new course(subject) introduced meet contemporary (existing)	9	14	4	2.18
5	Design of the course (subjects) encourage/motivates extra learning or self-learning.	10	15	2	2.29
6	How do you Rate the competencies/outcomes in relation to the course content?	9	16	2	2.25
7	What other course that you suggest to be included in the curriculum?	10	17	1	2.33



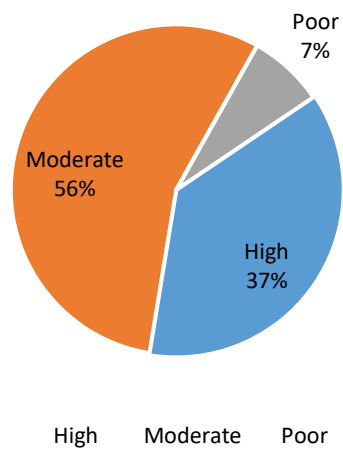
Dr. G. Mehta

Head, Aero Dept

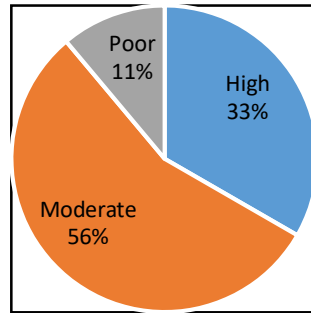
1) Curriculum Meets prerequisite and basic knowledge required for the career.



2) Usefulness of learning experience in the career

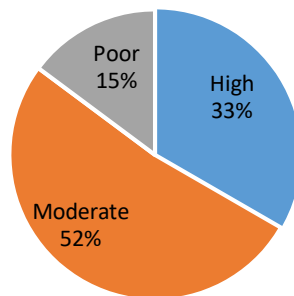


3) Electives offered in relation to the technological advancements.



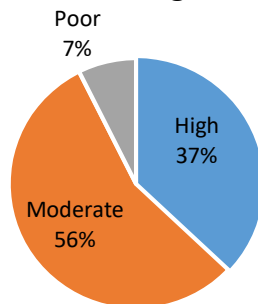
■ High ■ Moderate ■ Poor

4) The new course(subject) introduced meet contemporary (existing)



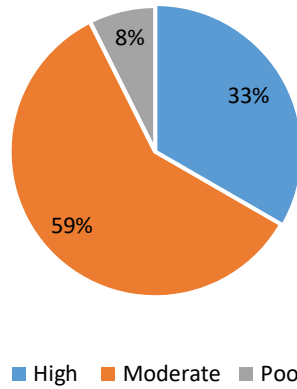
■ High ■ Moderate ■ Poor

5) Design of the course (subjects) encourage/motivates extra learning or self-learning.

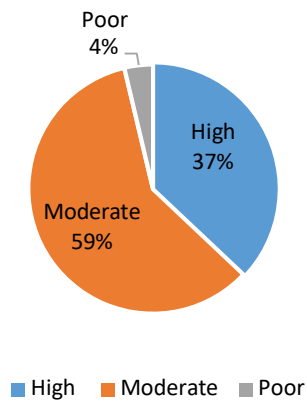


■ High ■ Moderate ■ Poor

6) How do you Rate the competencies/outcomes in relation to the course content?



7) What other course that you suggest to be included in the curriculum?



Priyadarshini College of Engineering, Nagpur

Department of Aeronautical Engineering

Feedback Analysis

Employer Feedback on Curriculum

Session 2020-21

Number of Employers participated in the feedback = 6

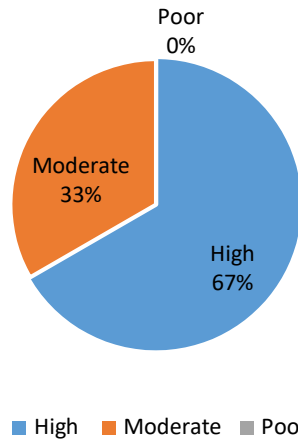
Sr. No	Particulars	Count of High (Wight=3)	Count of Moderate (Wight=2)	Count of poor (Wight=1)	Impact of Feedback
1	How do you rate relevance of the course in relation to the program?	4	2	0	2.66
2	How do you rate the sufficient of the course related to industry that are included in the program?	2	4	0	2.33
3	How do you rate the competencies/outcomes in relation to course content?	2	4	0	2.33
4	How do you rate the relevance of the topics to the industry?	3	3	0	2.5
5	Rate the offering of the subjects in relation to the specialization streams?	5	1	0	2.83
6	How do you rate the applicability of the domains the experiments in terms of existing practices in the industry?	2	4	0	2.33
7	How do you rate the experiments in terms of their relevance to the real life application?	4	2	0	2.66
8	How do you rate the proficiency of our students working with you?	5	1	0	2.83
9	What other courses that you suggest to be included in the curriculum?	4	2	0	2.66



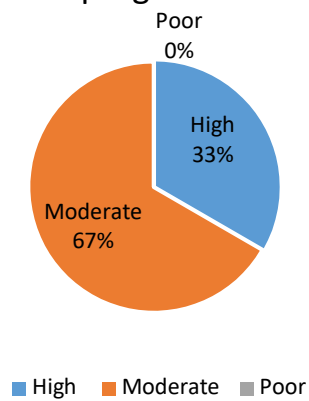
Dr. G. Mehta

Head, Aero Dept, PCE,

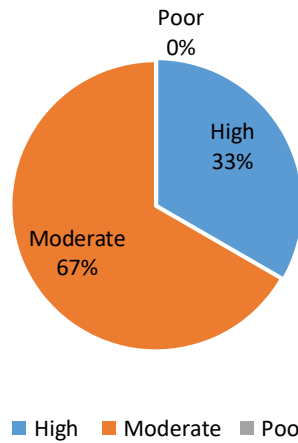
1) How do you rate relevance of the course in relation to the program?



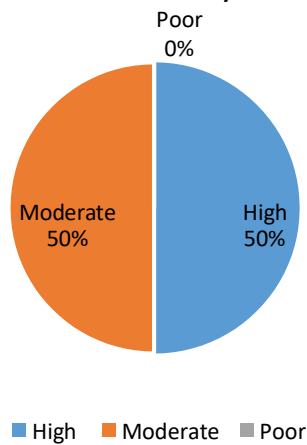
2) How do you rate the sufficient of the course related to industry that are included in the program?



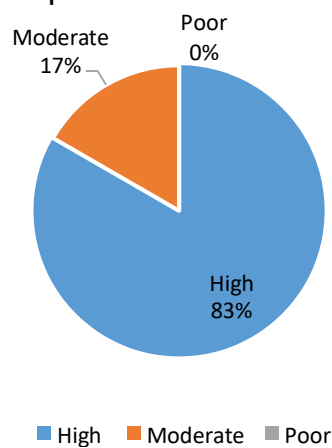
3) How do you rate the competencies/outcomes in relation to course content?



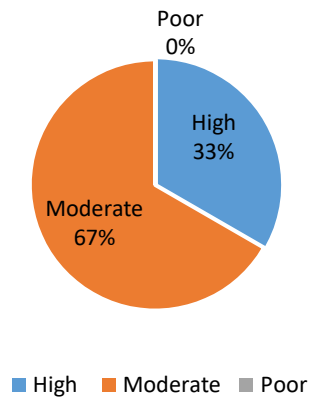
4) How do you rate the relevance of the topics to the industry?



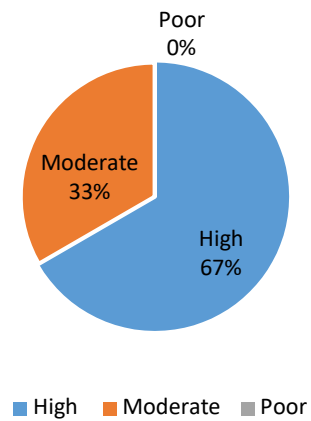
5) Rate the offering of the subjects in relation to the specialization streams?



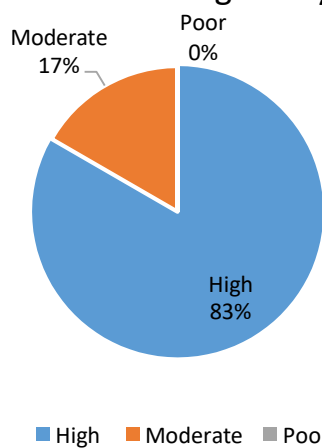
6) How do you rate the applicability of the domains the experiments in terms of existing Practices in the industry?



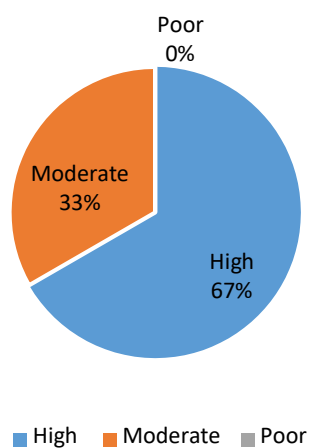
7) How do you rate the experiments in terms of their relevance to the real life application?



8) How do you rate the proficiency of our Students working with you?



9) What other courses that you suggest to be included in the curriculum?



Priyadarshini College of Engineering, Nagpur

Department of Aeronautical Engineering

Feedback Analysis

Teachers Feedback on Curriculum

Session 2020-21

Number of Teachers participated in the feedback = 7

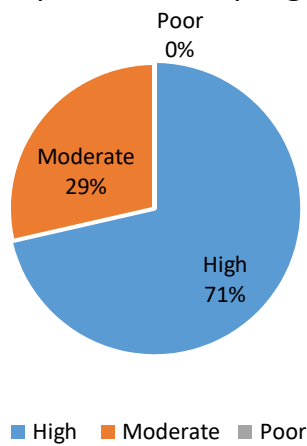
Sr. No	Particulars	Count of High (Wight=3)	Count of Moderate (Wight=2)	Count of poor (Wight=1)	Impact of Feedback
1	The learning objectives are clear and appropriate to the program	5	2	0	2.71
2	The curriculum and syllabus are well organized and suitable to the program	6	1	0	2.86
3	The text Books/Reference Books are well suited to the course	6	1	0	2.86
4	How do you rate the competencies/outcomes in relation to the course content?	4	3	0	2.57
5	Provision to update curriculum time to time	2	5	0	2.29
6	How do you rate the applicability of the domains and the tools used for designing the experiments in terms of existing practices in the industry?	4	3	0	2.57
7	The curriculum has a good balance between theory and practical.	5	2	0	2.71
8	How do you rate the electives offered in relation to the technological advancement	3	4	0	2.43



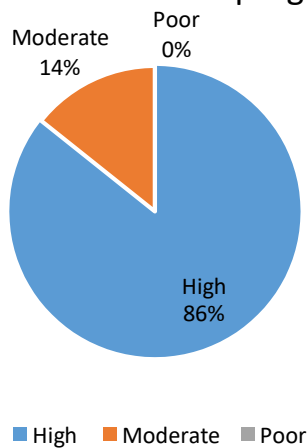
Dr. G. Mehta

Head, Aero Dept,

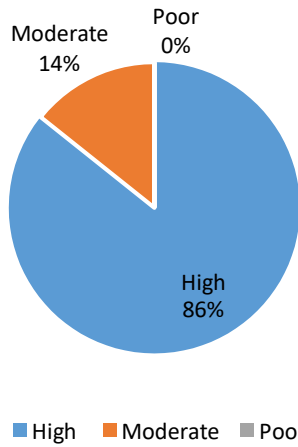
1) The learning objectives are clear and appropriate to the program



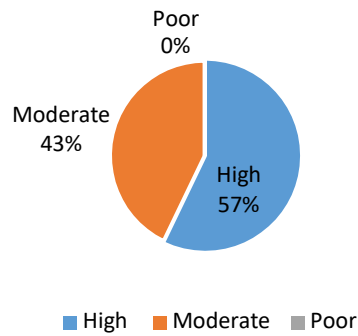
2) The curriculum and syllabus are well organized and suitable to the program



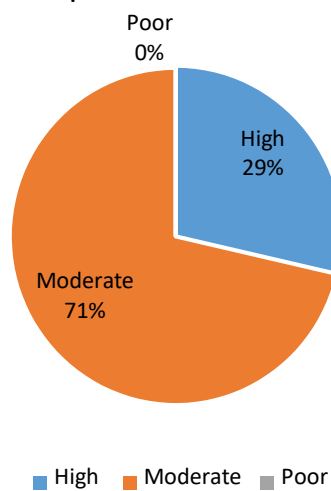
3) The text Books/Reference Books are well Suited to the course



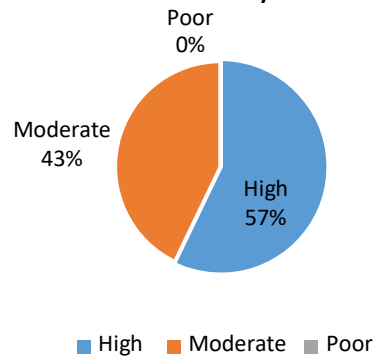
4) How do you rate the competencies/outcomes in relation to the course content?



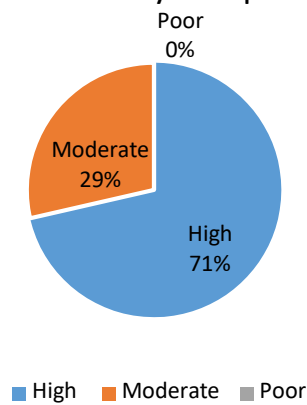
5) Provision to update curriculum time to time



6) How do you rate the applicability of the domains and the tools used for designing the experiments in terms of existing practices in the industry?



7) The curriculum has a good balance between theory and practical.



8) How do you rate the electives offered in relation to the technological advancement

